

12.2.2 Optional Lab: Advanced Installation of Windows Vista

Introduction

Print and complete this lab.

In this lab, you will install a Windows Vista operating system by using an answer file for automation. You will customize partition settings and create an Administrator user account and Users account.

Recommended Equipment

The following equipment is required for this exercise:

- A computer with a new installation of Windows Vista
- Windows Automated Installation Kit (WAIK) installation media
- Windows Vista installation media
- A blank, formatted floppy disk or a USB flash drive

Step 1

Ask the instructor for the following required information for the answer file:

Regional and language settings _____

Windows Vista Business product key _____

Partition sizes: Primary _____ Logical 1 _____ Logical 2 _____

Administrator account: Username _____

Password _____

User account: Username _____

Password _____

Computer name _____

Registered organization _____

Registered owner _____

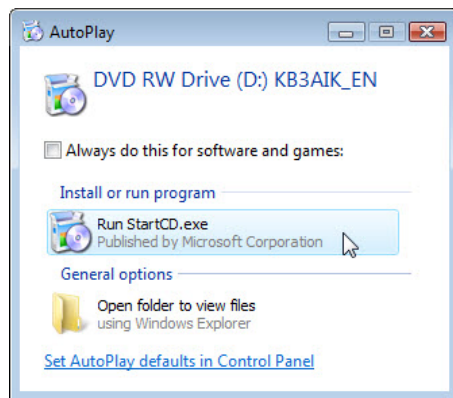
Time zone _____

Step 2

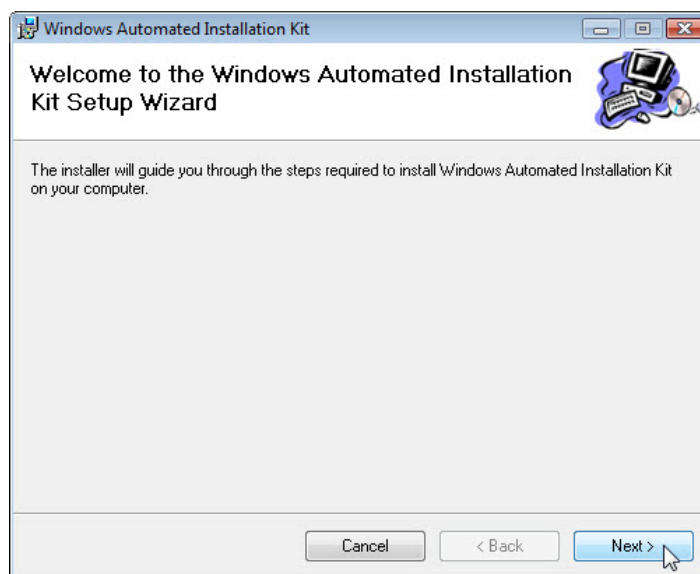
Log on to the computer as administrator.

Insert the Windows Automated Installation Kit (WAIK) DVD in the DVD-ROM drive.

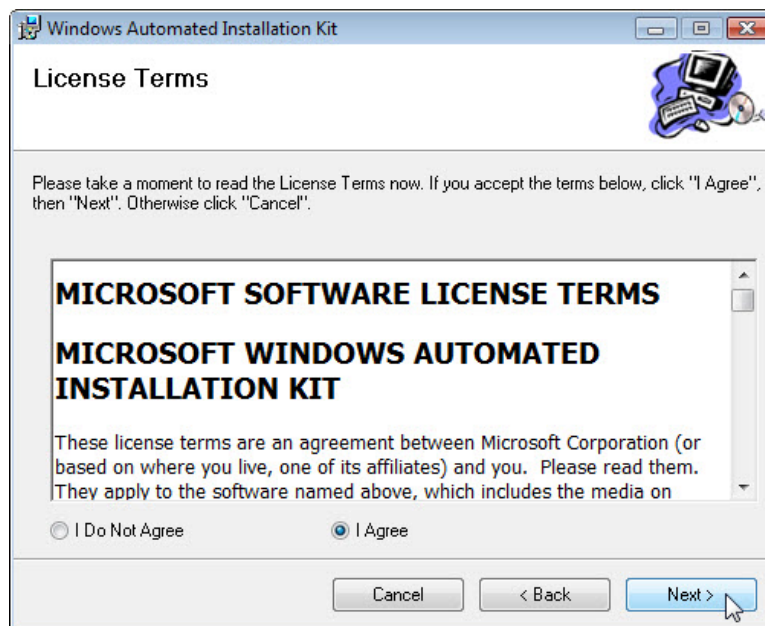
When the “AutoPlay” window appears, click **Run StartCD.exe**.



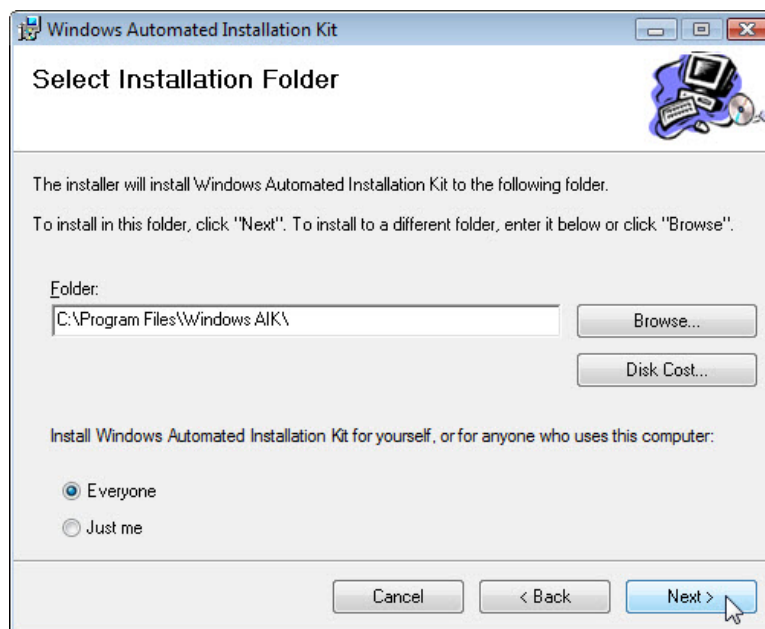
The “Welcome to Windows Automated Installation Kit” window appears, click **Windows AIK Setup**.



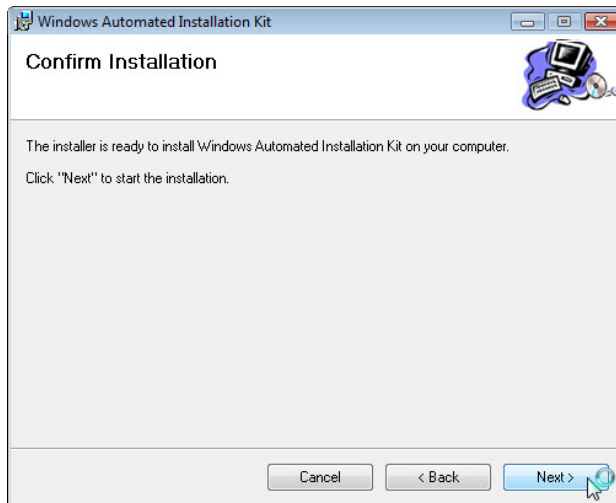
Select **I Agree** to license terms and then click **Next**.



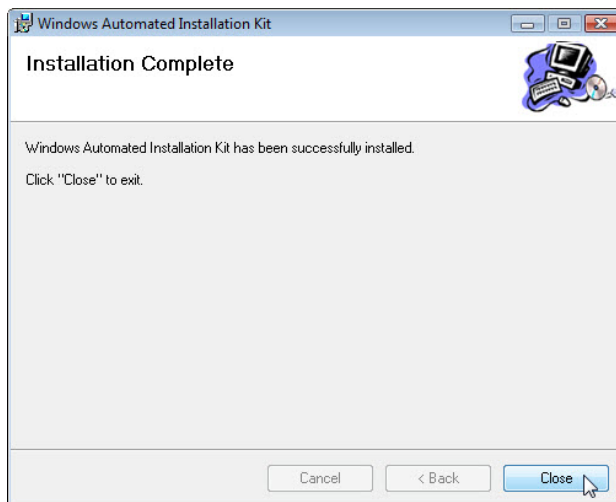
For the “Select Installation Folder” screen, keep the default settings and click **Next**.



Click **Next** to confirm and start the installation.



When the "Installation Complete" screen appears, click **Close**.



Click **Exit**.



Step 3

Create a fold called “Vista_Installation” at the root of C:. Example: **C:\Vista_Installation**.

Insert the Windows Vista Business DVD in the DVD-ROM drive.

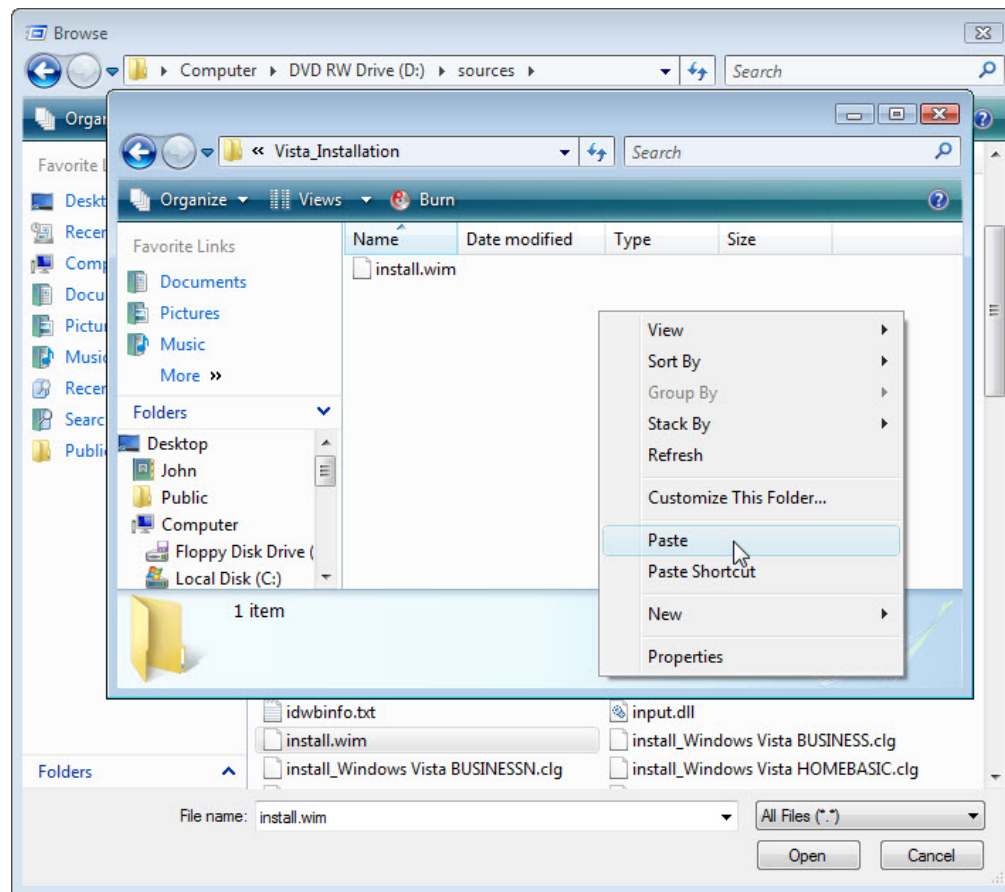
Close the “Install Windows” if it opens.

Navigate and copy “install.wim” from the Windows Vista installation DVD to C:\Vista_Installation.

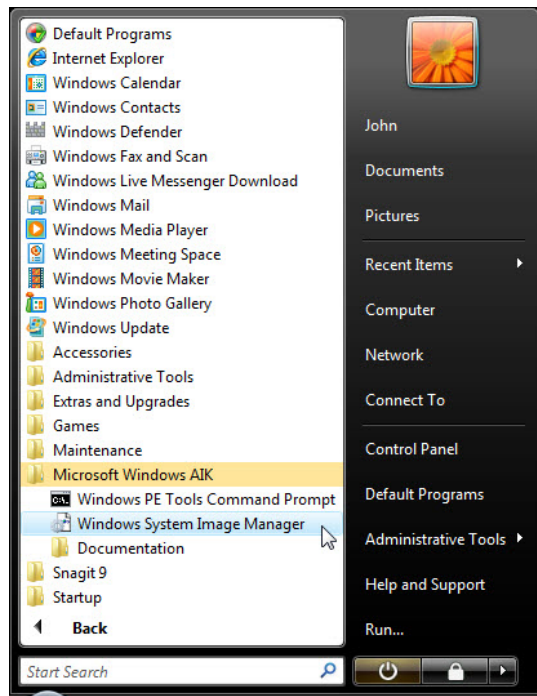
Note: The install.wim file is 2.6GB and may take several minute to copy.

Start > Computer > right-click the DVD drive > select Explore. Then double-click **sources > right-click on install.wim > copy.**

Start > Computer > double-click C: drive > double-click Vista_Installation > right-click Paste.

**Step 4**

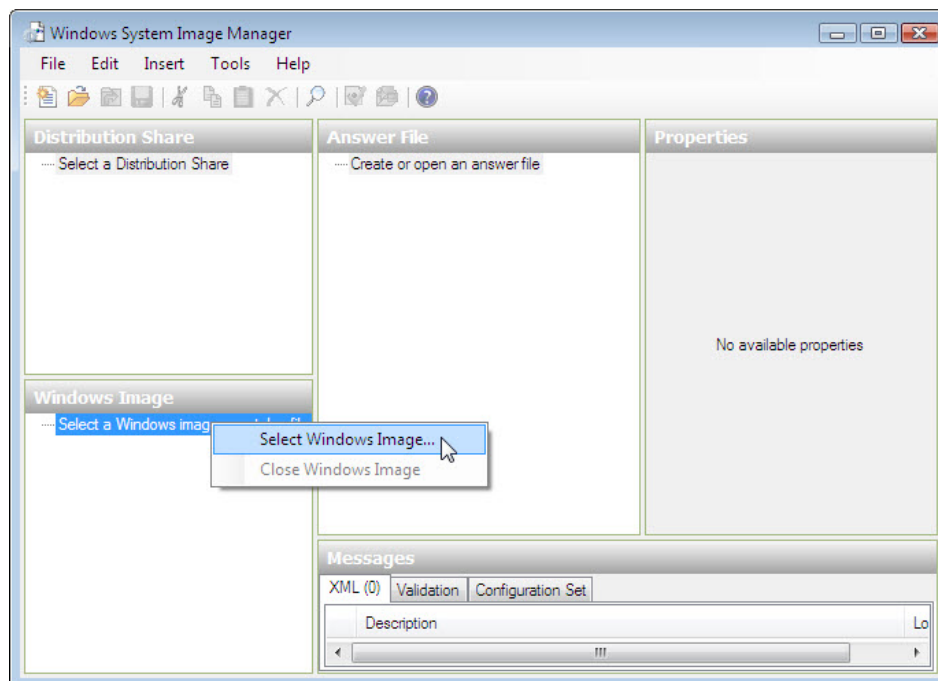
Start > All Programs > Microsoft Windows AIK > Windows System Image Manager.



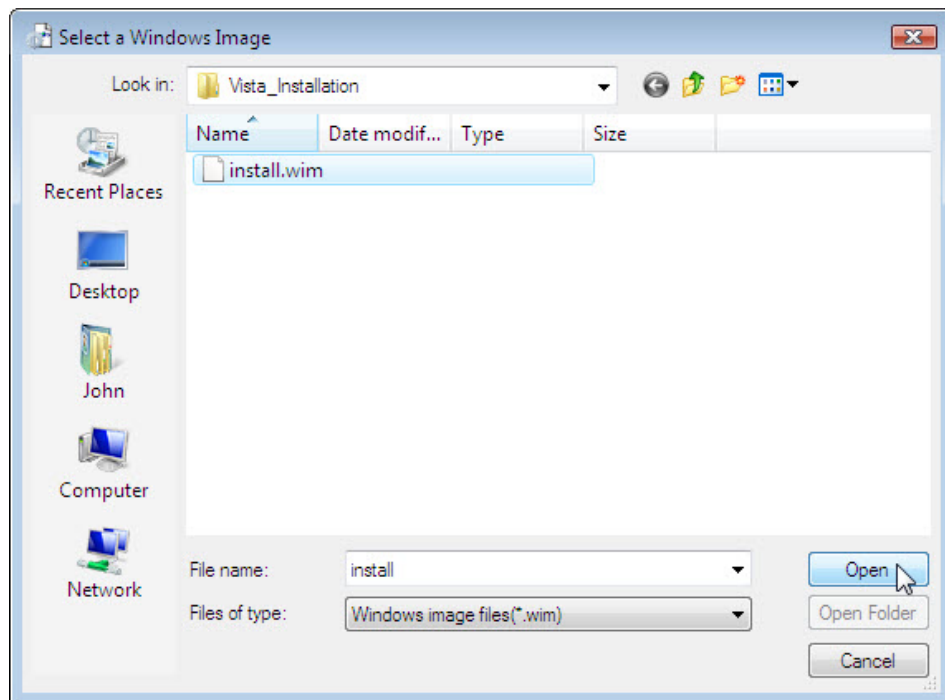
Step 5

The “Windows System Image Manager” window appears.

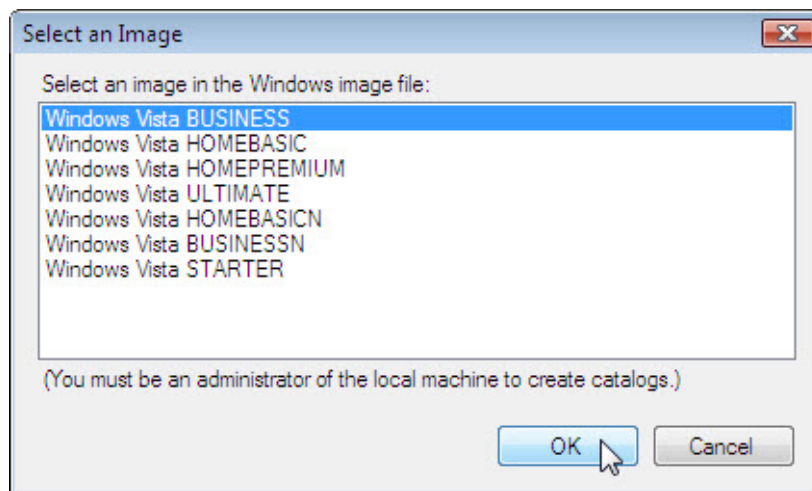
Right-click **Select a windows image or catalog file** then click **Select Windows Image**.



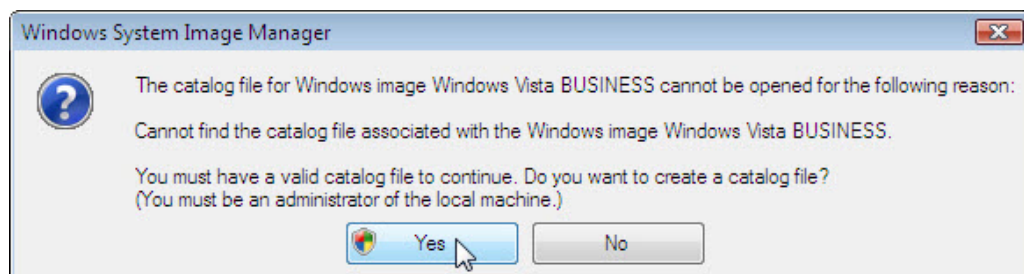
Browses to **C:\Vista_Installation** > select **install.wim** > click **Open**.



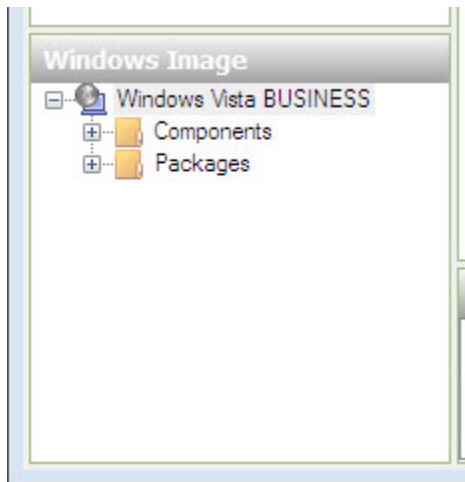
Select **Windows Vista BUSINESS** > click **OK**.



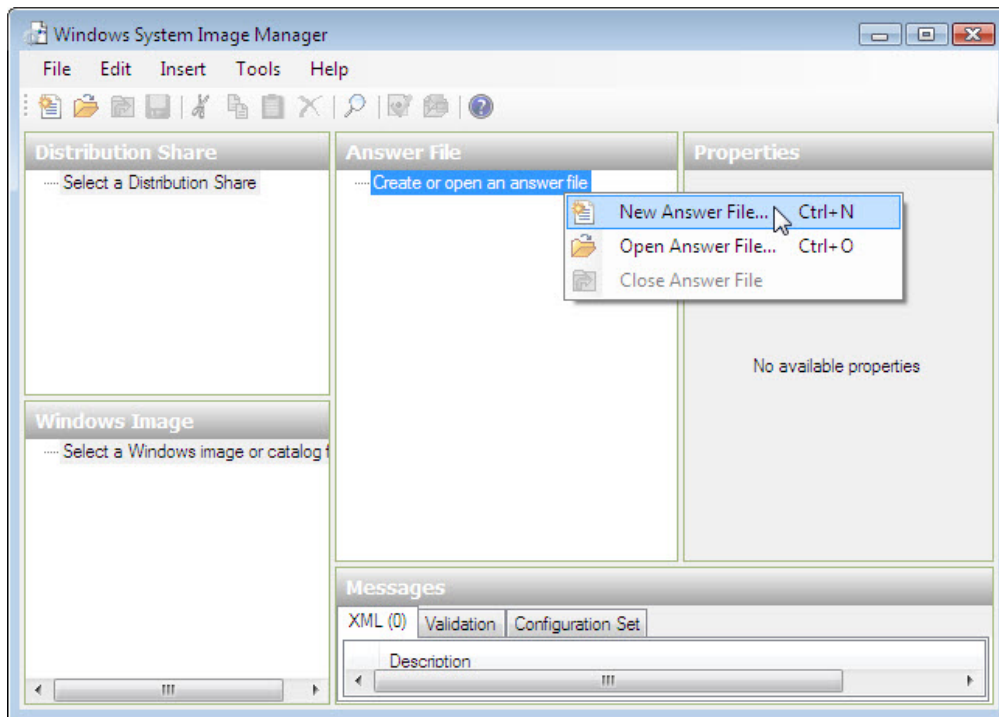
Click **Yes** to create a catalog file > **Continue**. This may take several minutes.



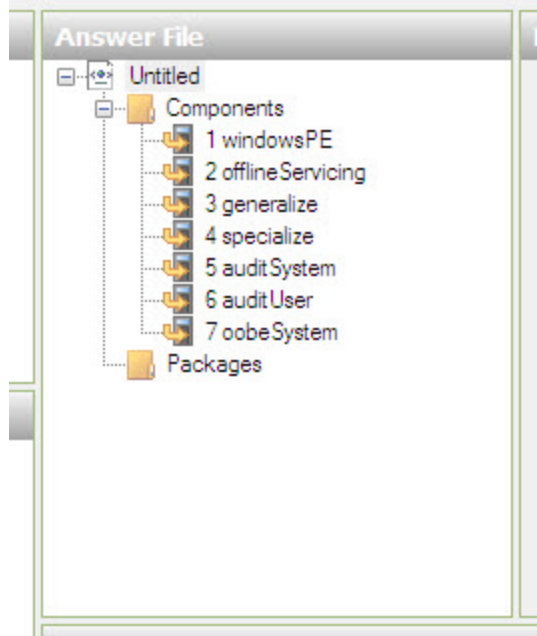
A catalog file is generated in the Windows Image pane.



Right-click **Create or open an answer file** then click **New Answer File**.



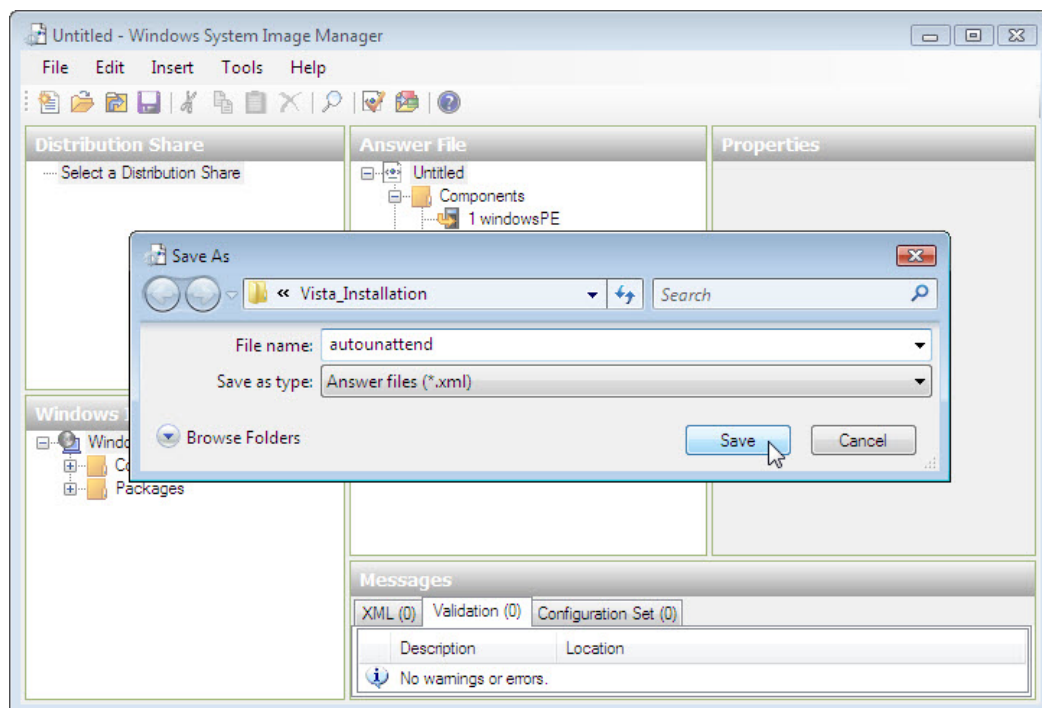
A new unconfigured answer file is created in the Answer File pane.



To name the file select the root node **Untitled**.

Click **File > Save Answer File >** name the file **autounattend**. Make sure the **Vista_Installation** folder is selected then click **Save**.

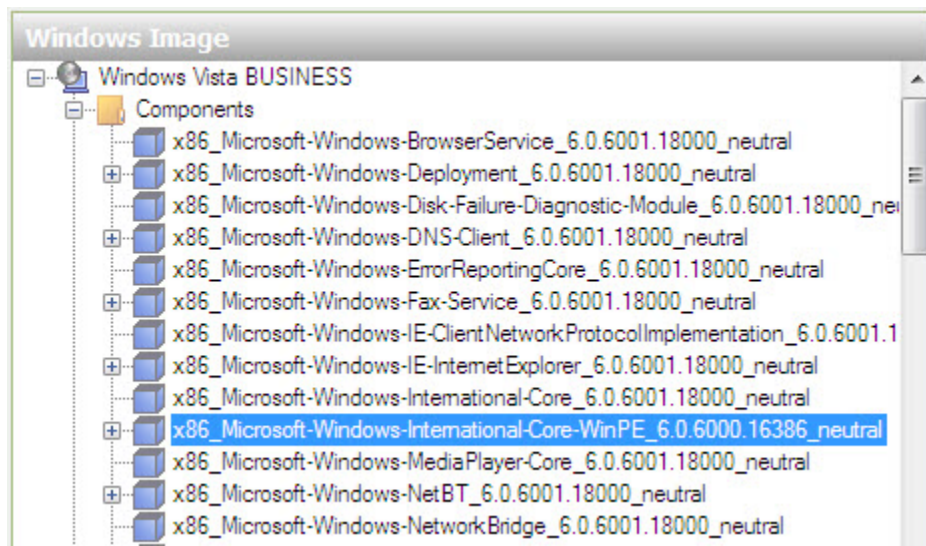
Note: It is important to name the file “autounattend” as Vista will only search for that file name when performing an unattended installation.



Step 6

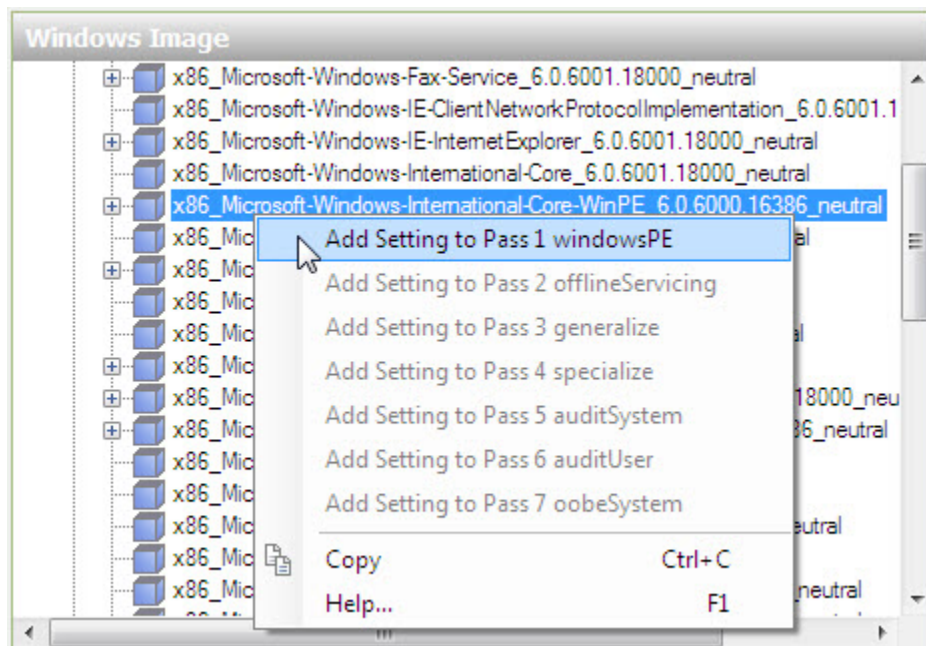
Regional and Language Options Settings

In the Windows Image pane, expand **Components**.

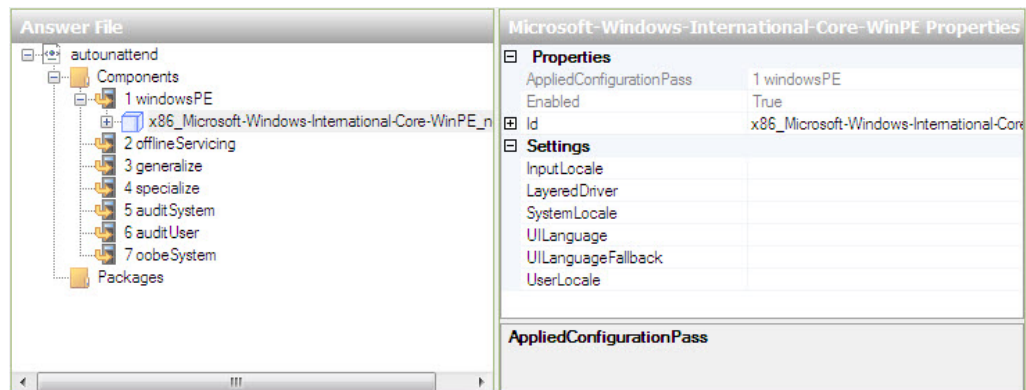


Note: The actual name of the components will have a prefix and suffix attached, for example: x86_Microsoft-Windows-International-Core-WinPE_6.0.6000.16386_neutral. The prefix is “x86” and the suffix is “6.0.6000.16386_neutral”. For simplicity the prefix and suffix will be left out in the lab instructions.

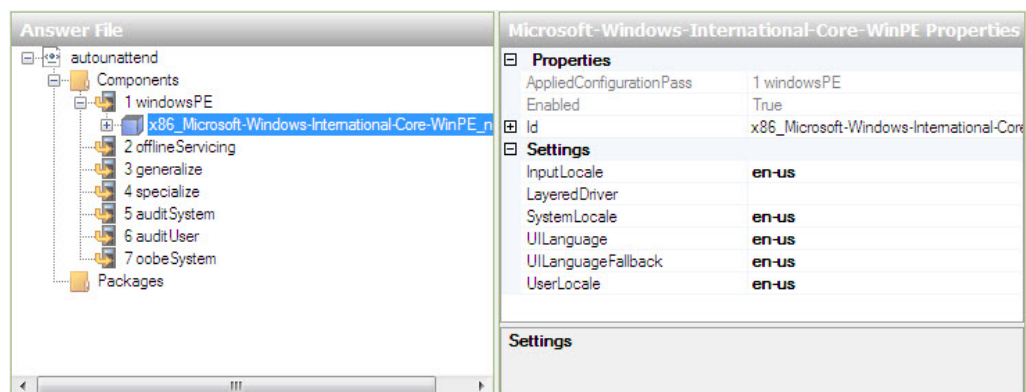
Right-click **Microsoft-Windows-International-Core-WinPE** > select **Add Settings to Pass 1 windowsPE**.



Notice Microsoft-Windows-International-Core-WinPE has been added to the Answer File and Properties panes.



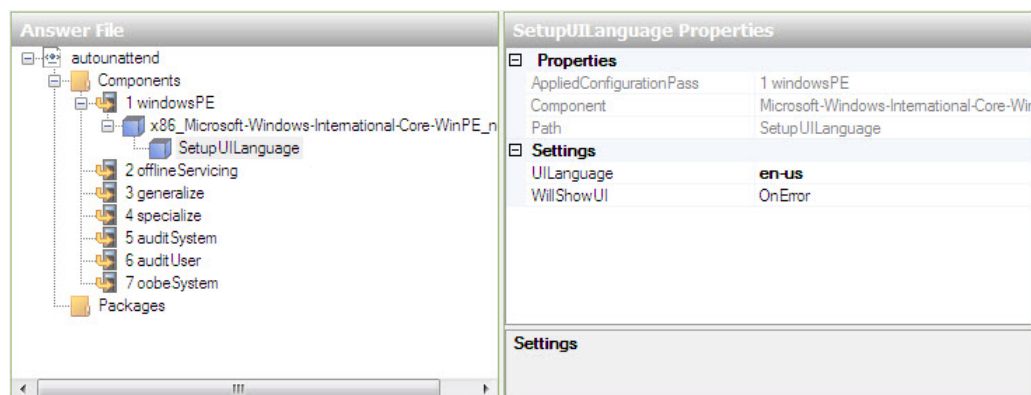
Select **Microsoft-Windows-International-Core-WinPE** in the Answer File pane. In the Microsoft-Windows-International-Core-WinPE Properties pane type the language settings provided by your instructor, in the following locations: InputLocale, SystemLocale, UILanguage, UILanguageFallback, and UserLocale. For example: **en-us**.



Note: Place the cursor next to a setting in the Properties pane and press the F1 key to view Windows Help file for the setting. Supported regional and language settings are located here: [http://technet.microsoft.com/en-us/library/cc722435\(WS.10\).aspx](http://technet.microsoft.com/en-us/library/cc722435(WS.10).aspx).

In the Answer File pane expand **Microsoft-Windows-International-Core-WinPE >** select **SetupUILanguage**. In the SetupUILanguage Properties pane type the language settings provided by your instructor, in the UILanguage location. For example: **en-us**.

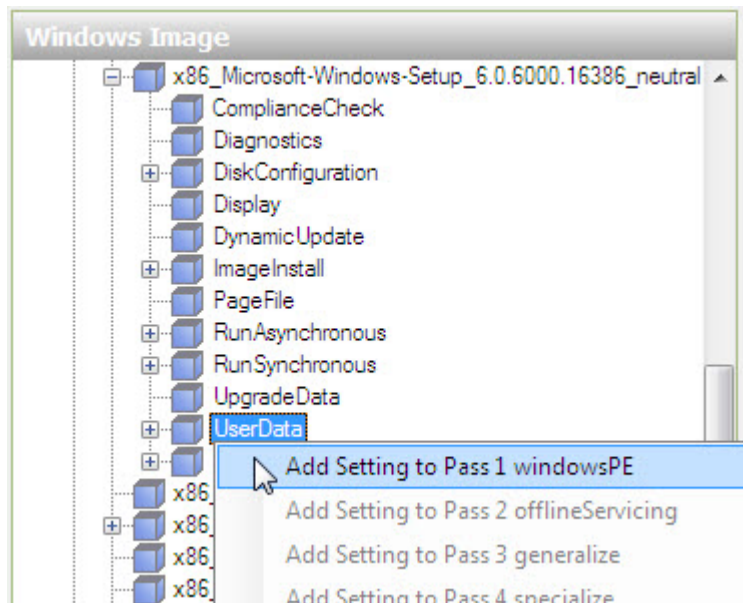
Confirm **OnError** is selected for WillShowUI.



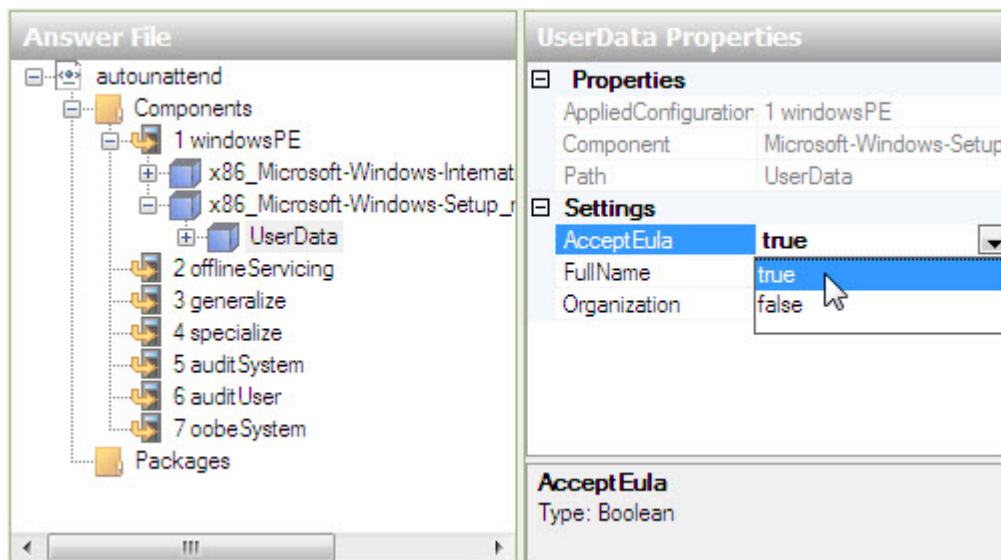
Step 7

End User License Agreement and Windows Vista Product Key Settings

In the Windows Image pane locate and expand component **Microsoft-Windows-Setup** > right-click **UserData** > select **Add Setting to Pass 1 windowsPE**.

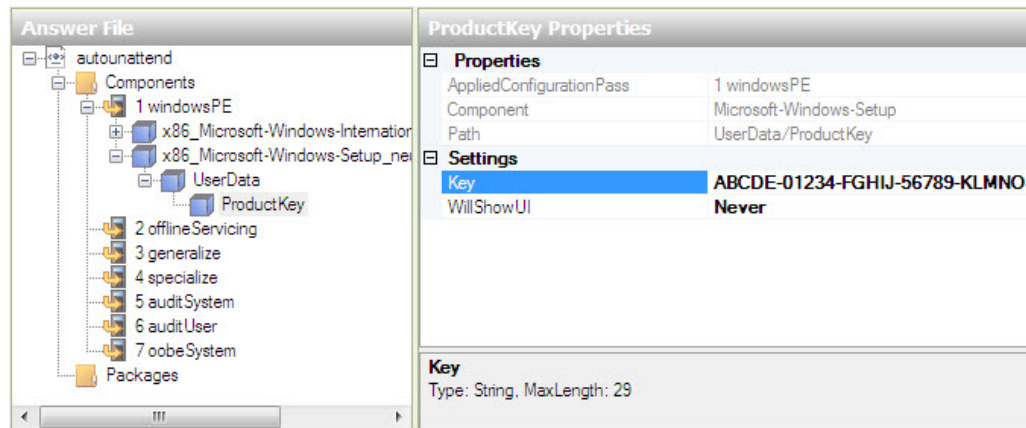


Select **UserData** in the Answer File pane. In the UserData Properties pane click in the box to the right of **AcceptEula**. Click the drop-down arrow and select **true**.



In the Answer File pane expand **UserData** > select **ProductKey**. In the ProductKey Properties pane click in the box to the right of **Key** and enter the Windows Vista Business product key provided by the instructor.

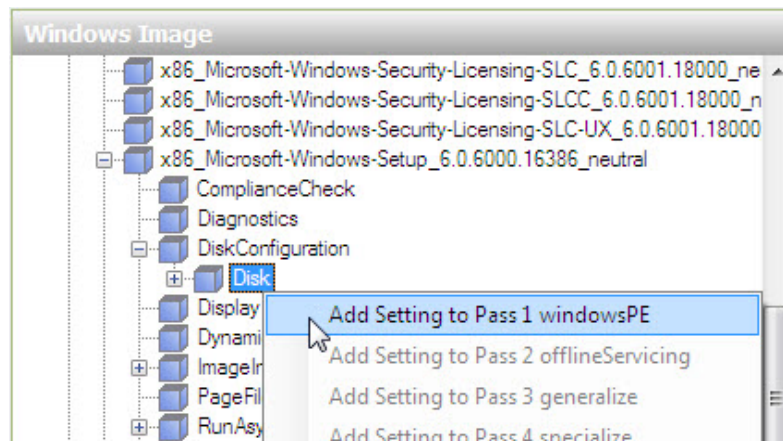
Next click in the box to the right of the **WillShowUI** > select **Never** from the drop-down arrow.



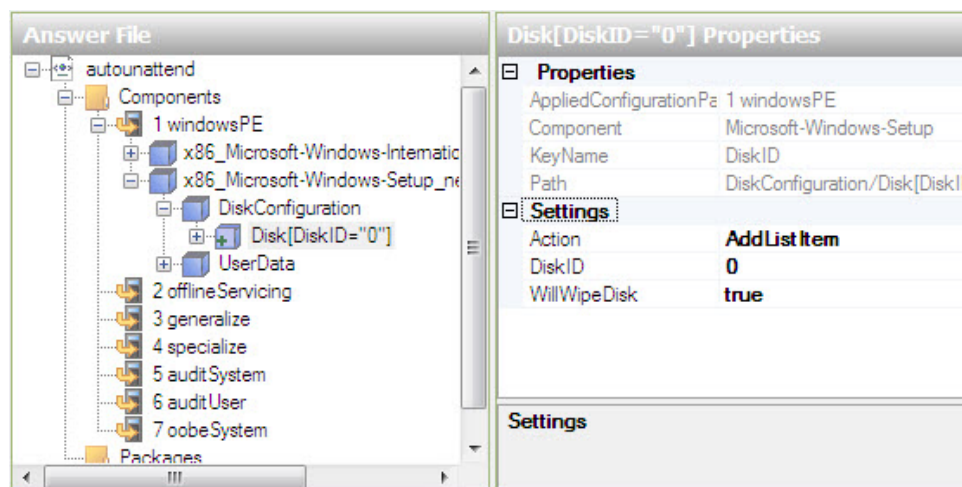
Step 8

Hard Drive Partition Settings

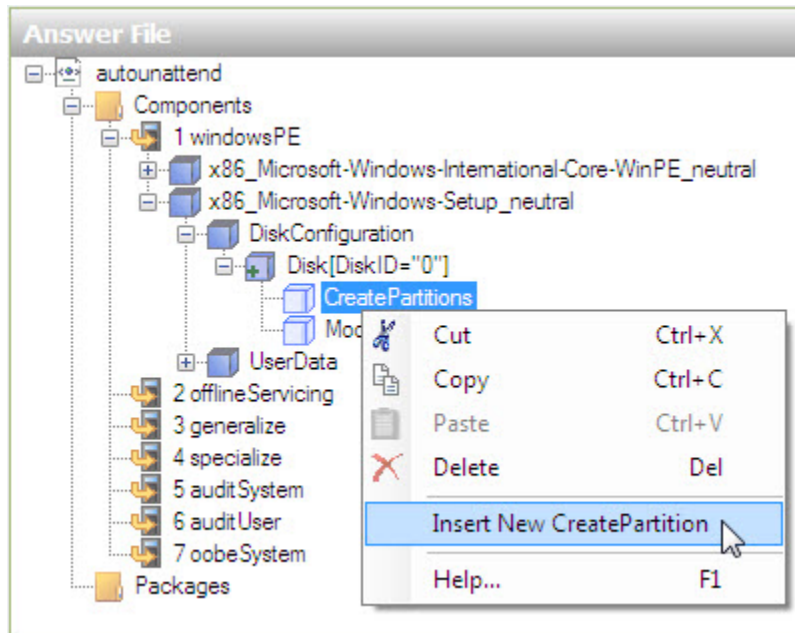
In the Windows Image pane locate and expand component **Microsoft-Windows-Setup\DiskConfiguration** > right-click **Disk** > select **Add Setting to Pass 1 windowsPE**.



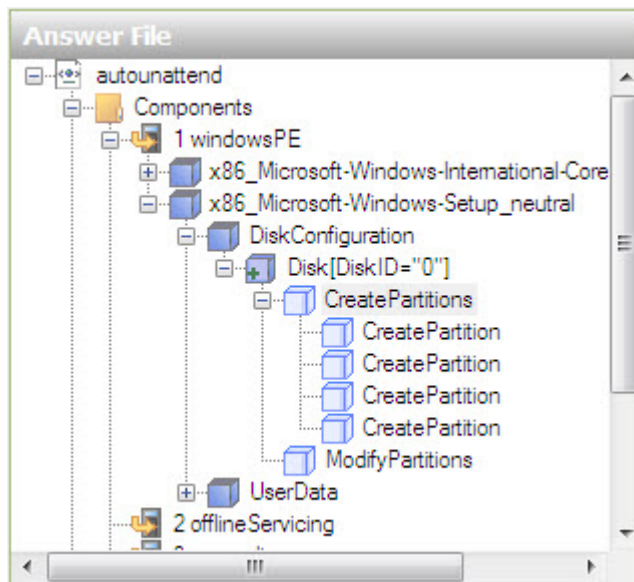
Select **Disk** in the Answer File pane. In the Disk Properties pane click in the box to the right of **DiskID** and type the number **0**. Also set **WillWipeDisk** to **true**.



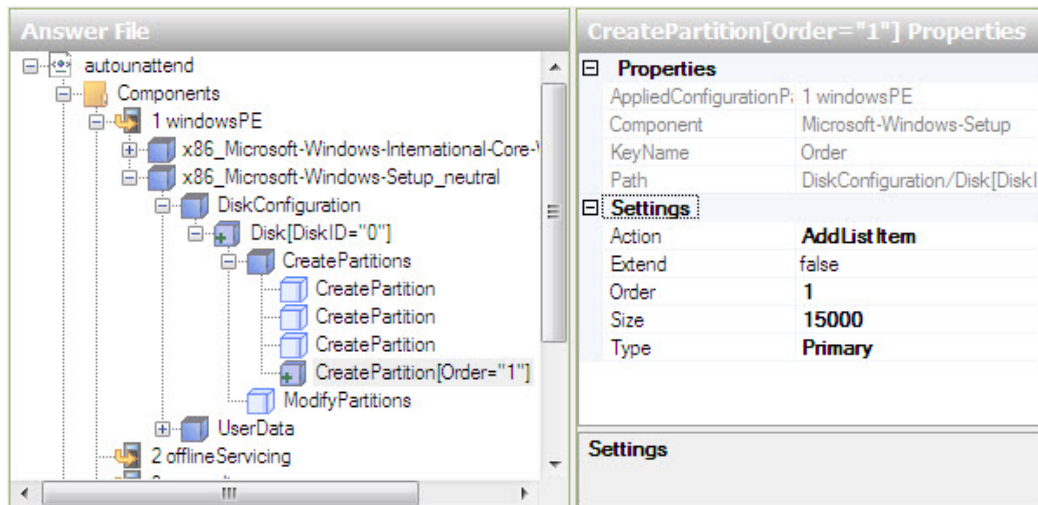
In the Answer File pane expand **Disk[DiskID="0"]** > right-click **CreatePartitions** > select **Insert New CreatePartition**.



Now add three more CreatePartition objects, for a total of four.

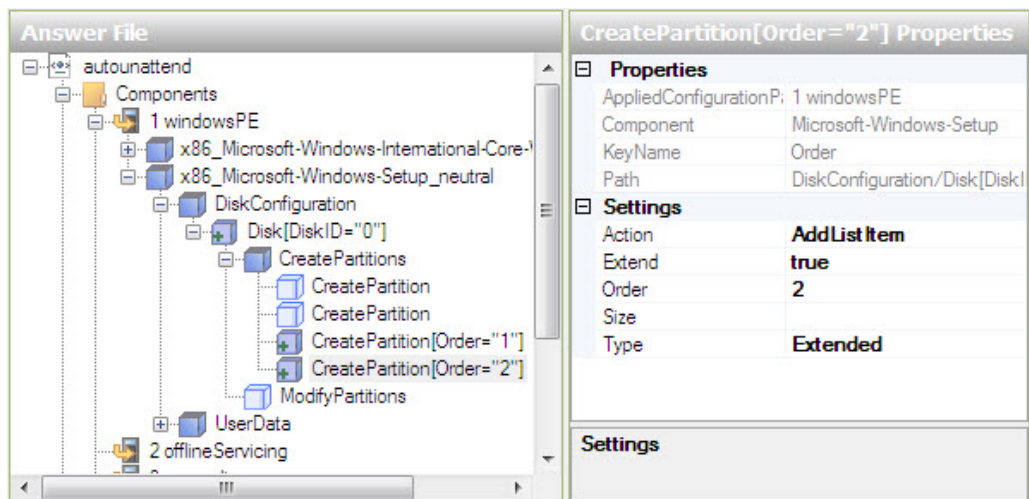


Select the top **CreatePartition** in the Answer File pane. In the CreatePartition Properties pane set the following values: Extend = **false**, Order = **1** and Type = **Primary**. For Size, use the primary partition size provided by the instructor. For example: Size = **15000**.

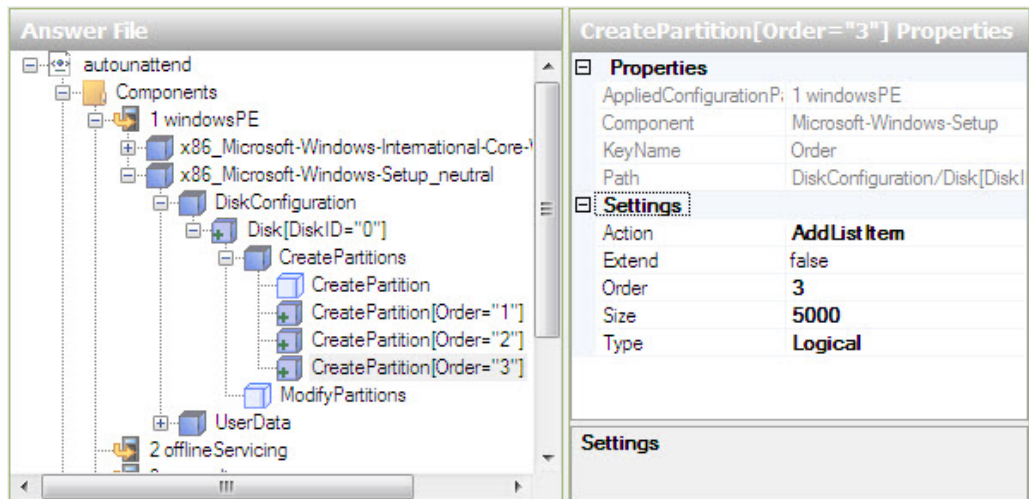


Notice that the newly configured partition moves to the bottom of the four CreatePartition objects.

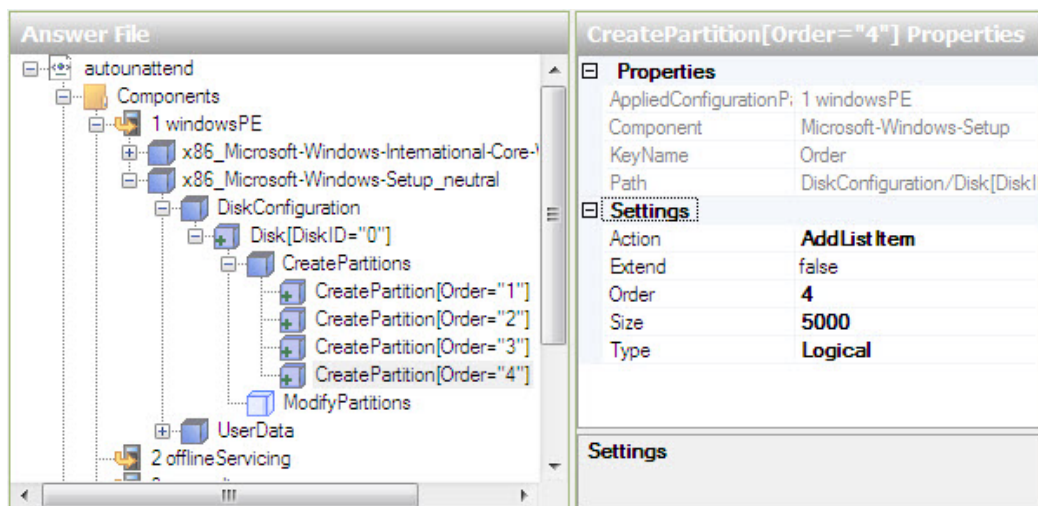
Select the top **CreatePartion** in the Answer File pane. In the CreatePartition Properties pane set the following values: Extend = **True**, Order = **2**, and Type = **Extended**.



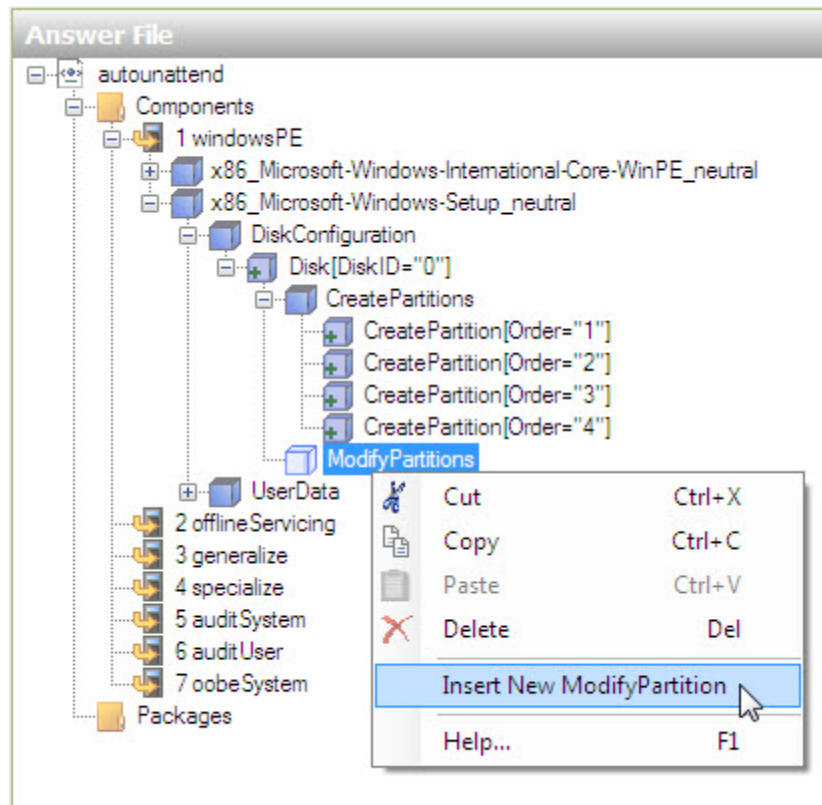
Select the top **CreatePartion** in the Answer File pane. In the CreatePartition Properties pane set the following values: Extend = **false**, Order = **3** and Type = **Logical**. For Size, use the logical 1 partition size provided by the instructor. For example: Size = **5000**.



Select the top **CreatePartion** in the Answer File pane. In the CreatePartition Properties pane set the following values: Extend = **false**, Order = **4** and Type = **Logical**. For Size, use the logical 2 partition size provided by the instructor. For example: Size = **5000**.

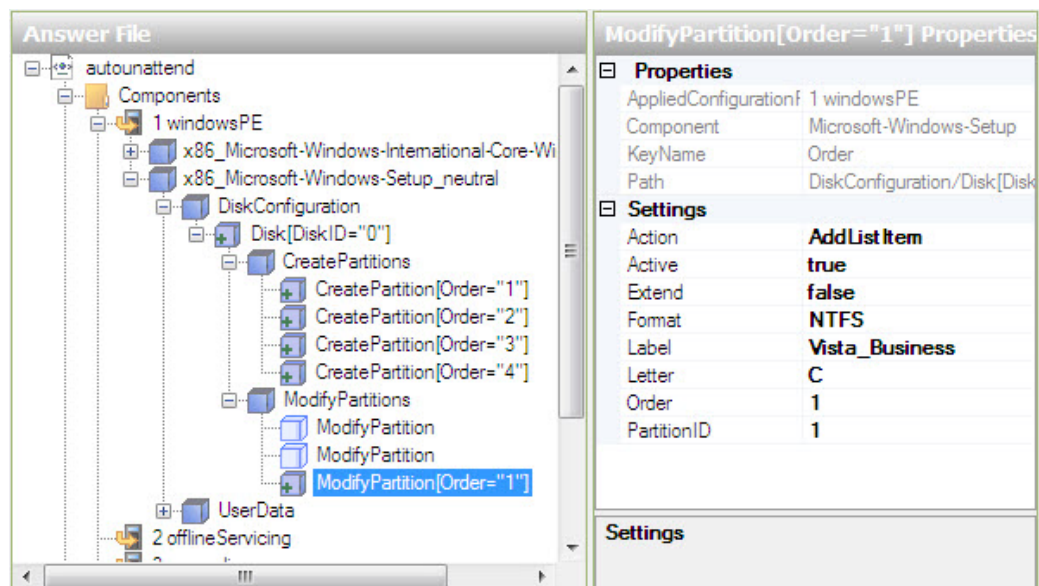


In the Answer File pane right-click **ModifyPartitions** > select **Insert New ModifyPartition**.

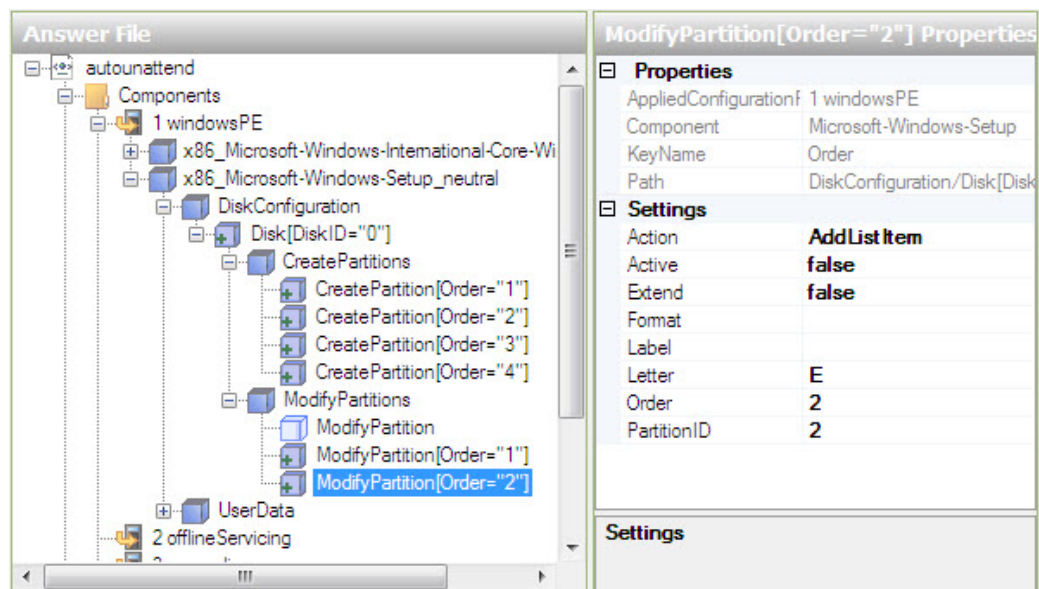


Now add two more ModifyPartition objects, for a total of three.

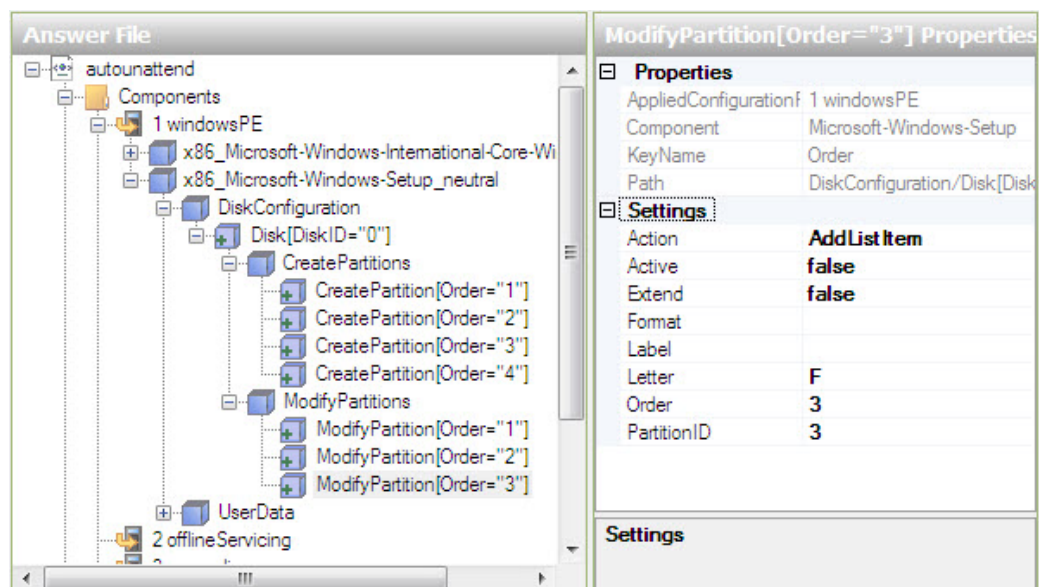
Select the top **ModifyPartition** in the Answer File pane. In the ModifyPartition Properties pane set the following values: Action = **AddListItem**, Active = **true**, Extend = **false**, Format = **NTFS**, Label = **Vista_Business**, Letter = **C**, Order = **1**, and PartitionID = **1**.



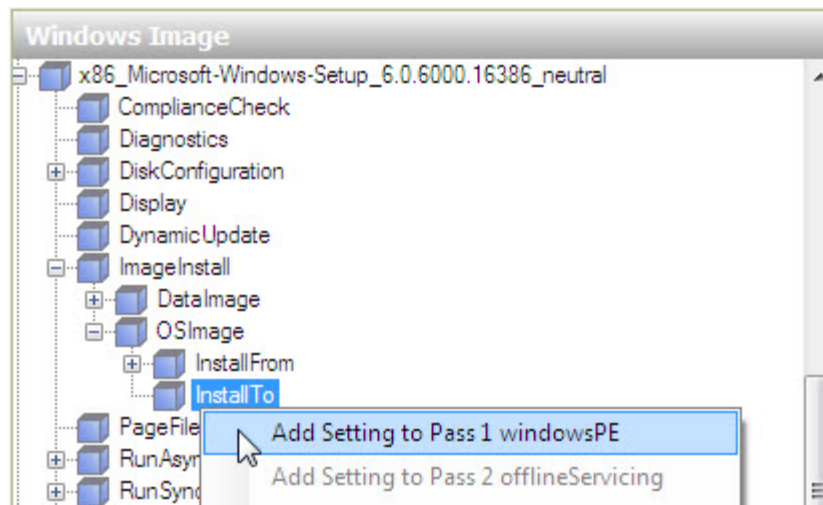
Select the top **ModifyPartition** in the Answer File pane. In the ModifyPartition Properties pane set the following values: Action = **AddListItem**, Active = **false**, Extend = **false**, Letter = **E**, Order = **2**, and PartitionID = **2**.



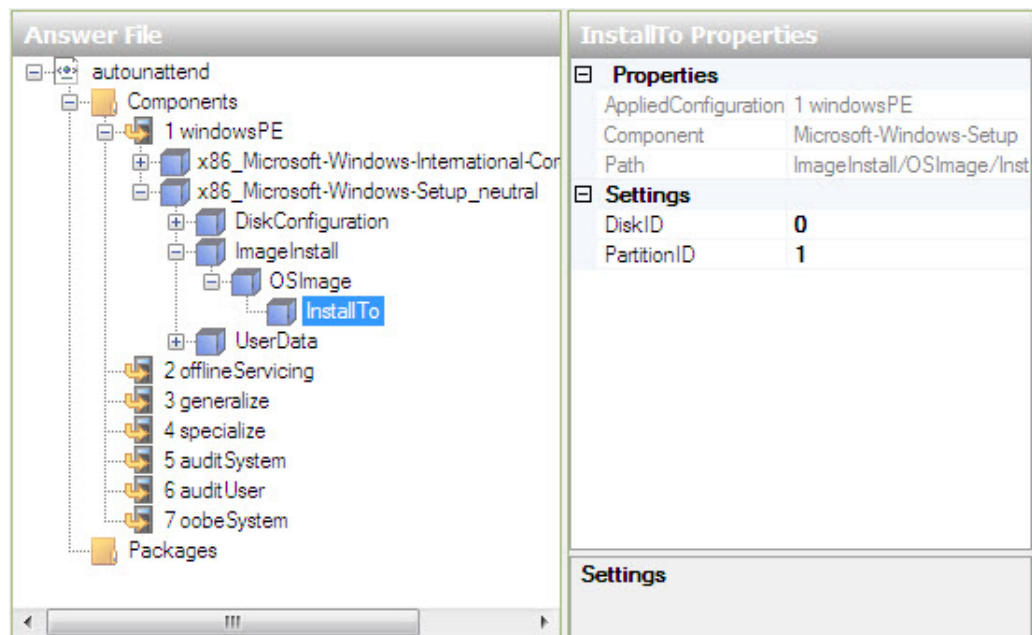
Select the top **ModifyPartition** in the Answer File pane. In the ModifyPartition Properties pane set the following values: Action = **AddListItem**, Active = **false**, Extend = **false**, Letter = **F**, Order = **3**, and PartitionID = **3**.



In the Windows Image pane locate and expand component **Microsoft-Windows-SetupDiskConfiguration\ImageInstall\OSImage\InstallTo** > right-click **InstallTo** > select **Add Setting to Pass 1 windowsPE**.



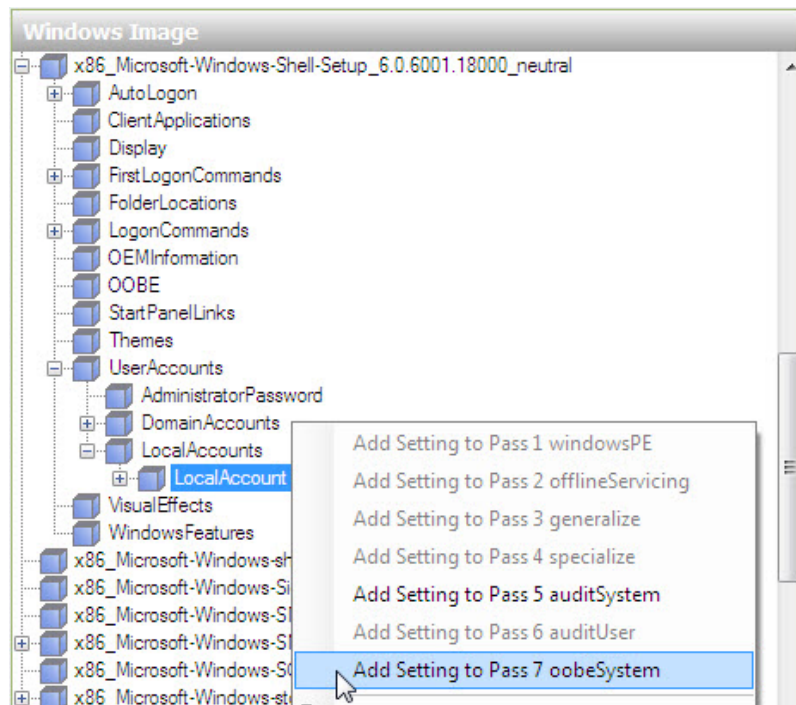
Select **InstallTo** in the Answer File pane. In the InstallTo Properties pane set the following values: DiskID = **0**, and PartitionID = **1**.



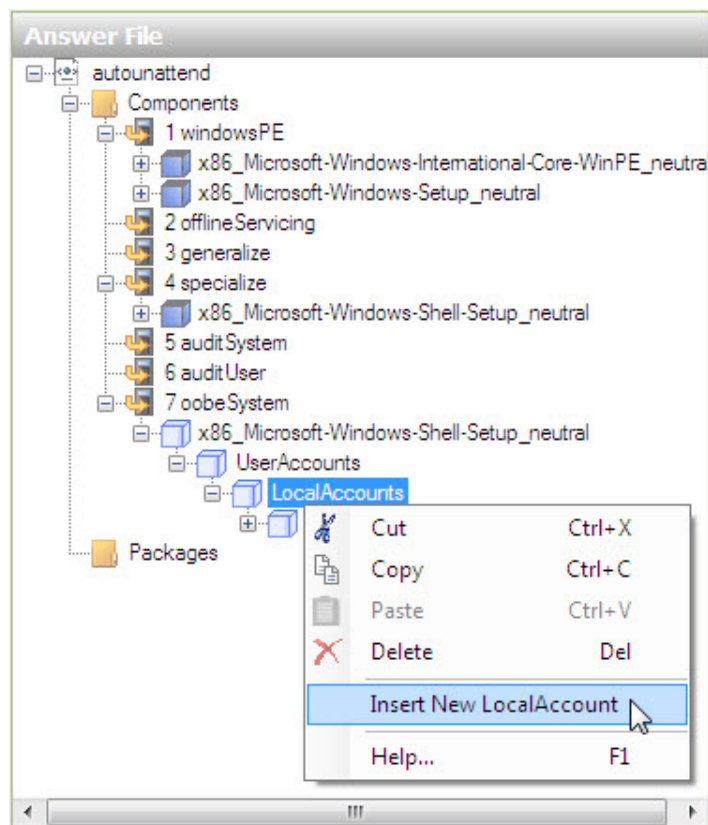
Step 9

User Name and Password Settings

In the Windows Image pane locate and expand component **Microsoft-Windows-Shell-Setup\UserAccounts\LocalAccounts** > right-click **LocalAccount** > select **Add Setting to Pass 7 oobeSystem**.



In the Answer File pane right-click **LocalAccounts** > select **Insert New LocalAccounts**.

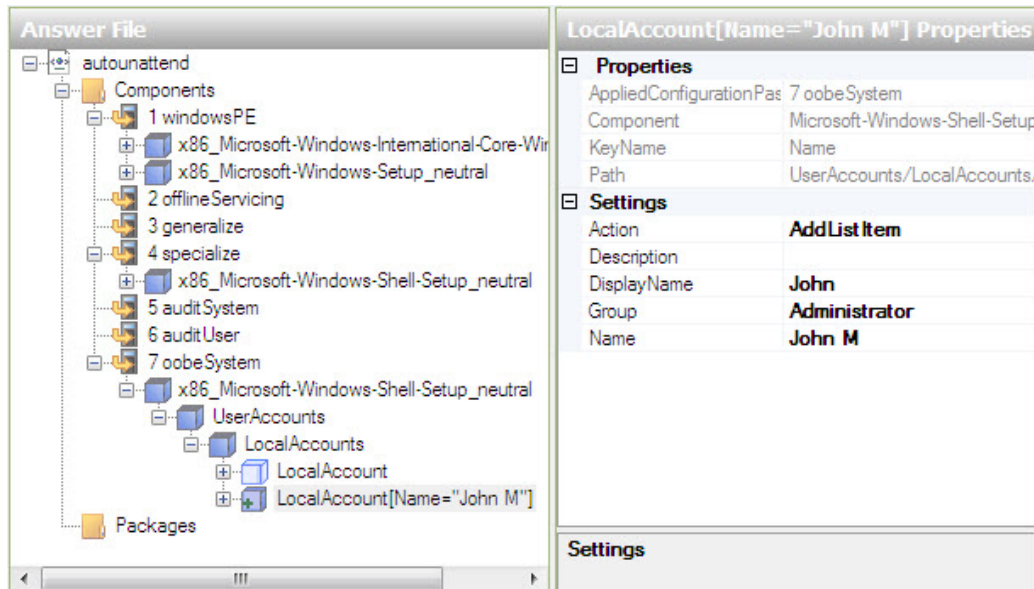


You should now have two LocalAccounts objects.

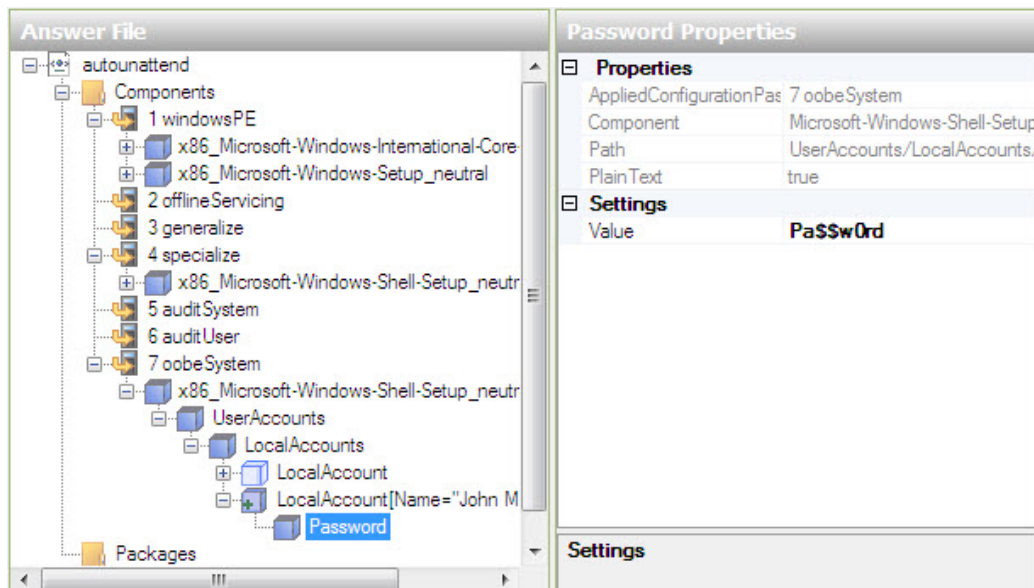
First setup an Administrators account.

Select the top **LocalAccount** in the Answer File pane. In the LocalAccount Properties pane type the DisplayName and Name provided by your instructor. Example: **John** and **John M.**

Type **Administrators** for the Group.



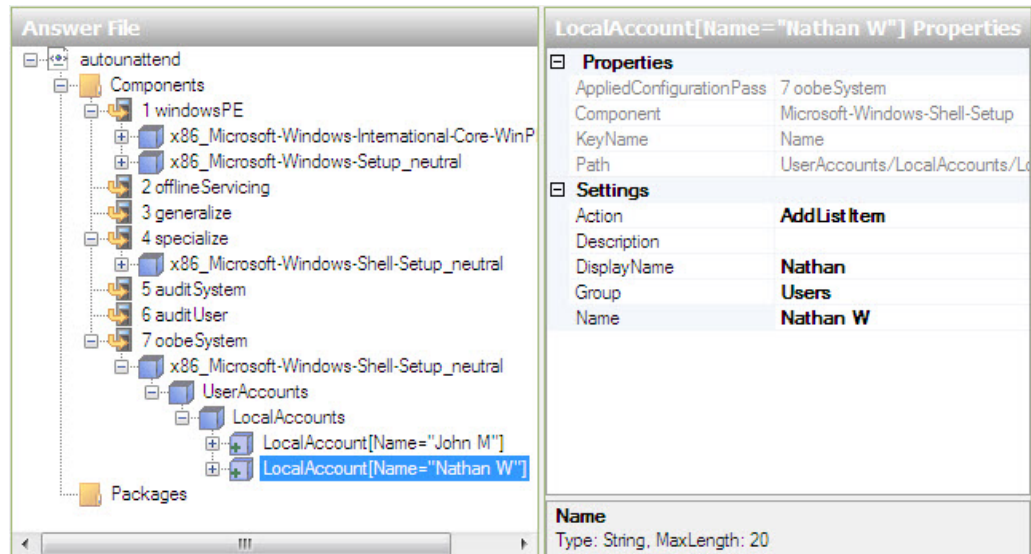
Expand **LocalAccount[Name="John M"]** > select **Password**. In the Password Properties pane type the password, in the Value setting, provided by your instructor. Example: **Pa\$\$w0rd**.



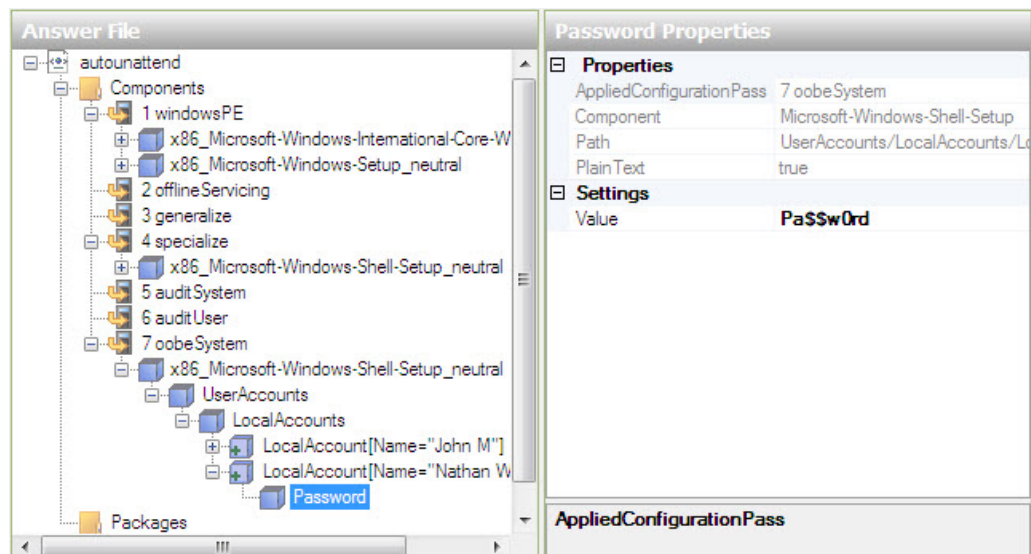
Now set up a Users account.

Select the top **LocalAccount** in the Answer File pane. In the LocalAccount Properties pane type the DisplayName and Name provided by your instructor. Example: **Nathan** and **Nathan W.**

Type **Users** for the Group.

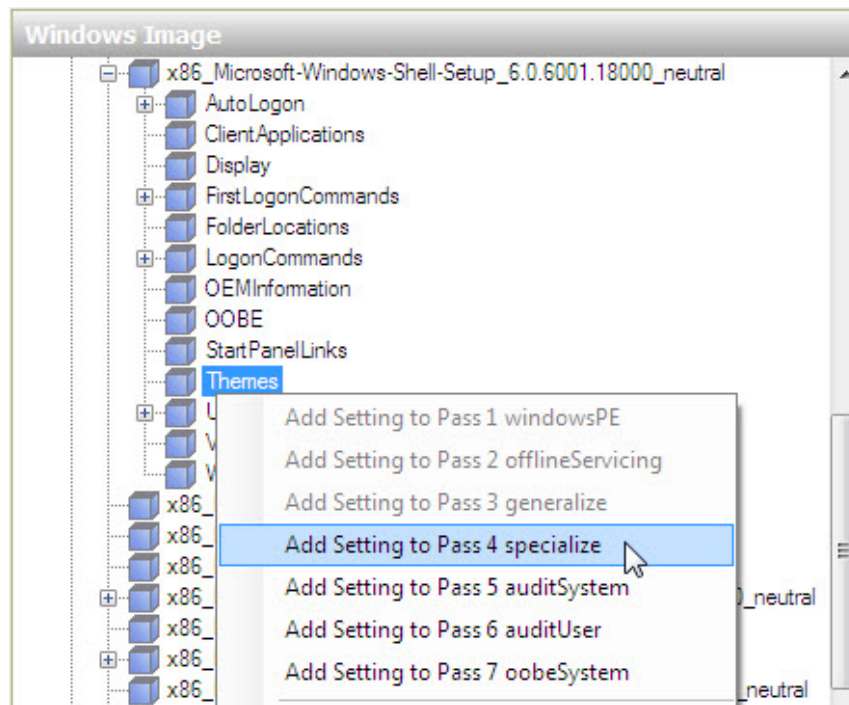


Expand **LocalAccount[Name="Nathan W"]** > select **Password**. In the Password Properties pane type the password, in the Value setting, provided by your instructor. Example: **Pa\$\$w0rd**.

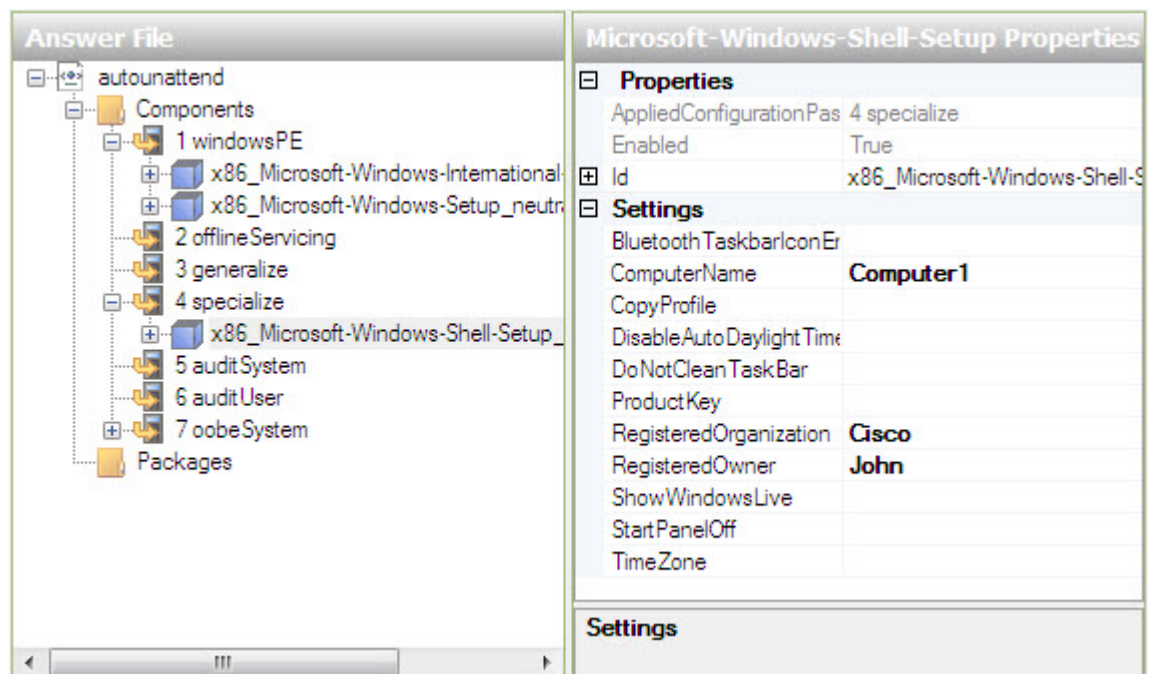


Step 10

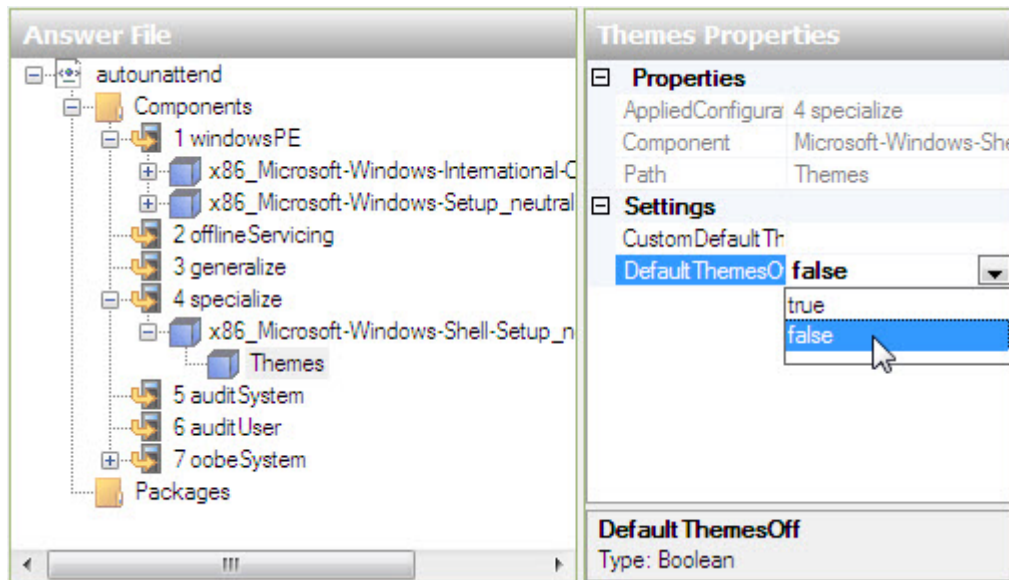
Computer Name, Registered Organization and Owner, and Default Theme Settings
In the Windows Image pane locate and right-click **Microsoft-Windows-Shell-Setup** > select **Add Setting to Pass 4 specialize**.



Select **Microsoft-Windows-Shell-Setup** in the Answer File pane below component 4 specialize. In the Microsoft-Windows-Shell-Setup Properties pane type the ComputerName, RegisteredOrganization and RegisteredOwner provided by your instructor. Example: **Computer1**, **Cisco**, and **John**.



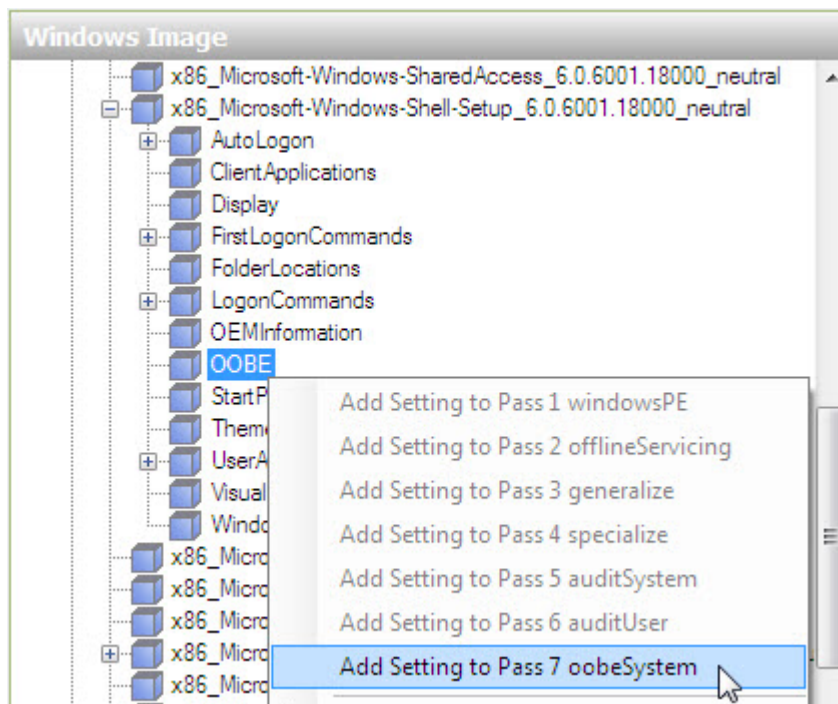
Expand Microsoft-Windows-Shell-Setup in component 4 specialize of the Answer File pane, and locate and select **Themes**. In the Themes Properties pane set the following value: DefaultThemesOff = **false**.



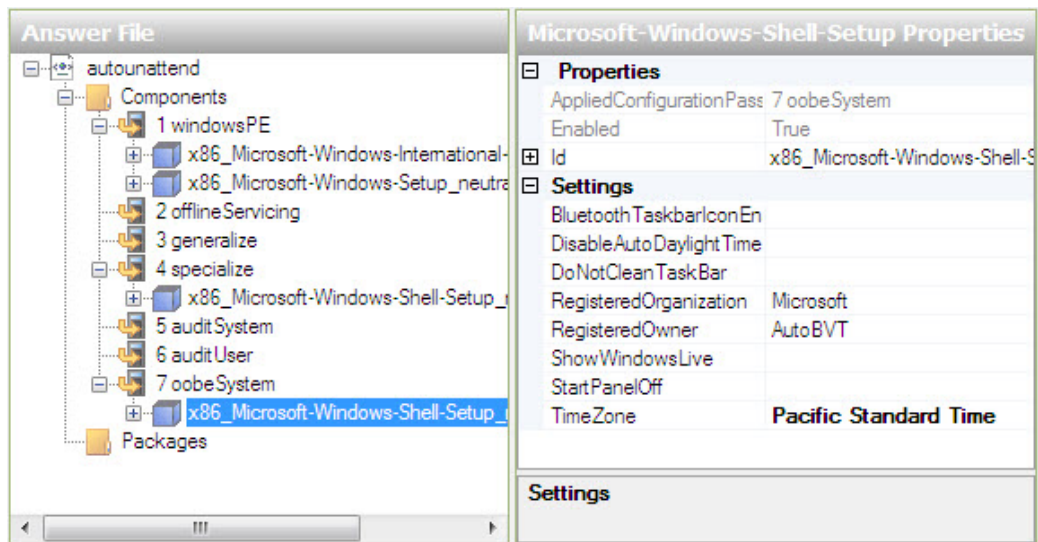
Step 11

PC Time Zone, Protection and Location Settings

In the Windows Image pane locate and expand component **Microsoft-Windows-Shell-Setup** > right-click **Oobe** > select **Add Setting to Pass 7 oobeSystem**.

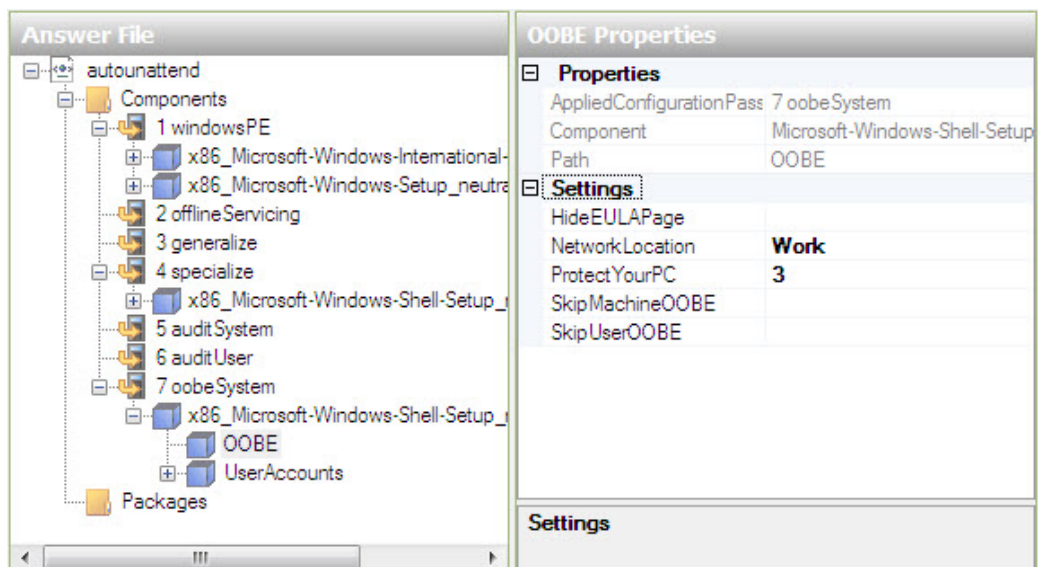


Select **Microsoft-Windows-Shell-Setup** in the Answer File pane below component 7 oobe System. In the Microsoft-Windows-Shell-Setup Properties pane type the time zone, in the TimeZone setting, provided by your instructor. Example: TimeZone = **Pacific Standard Time**.



Now select **Oobe** in the Answer File pane. In the Oobe Properties pane set the following value: NetworkLocation = **Work** and ProtectYourPC = **3**. This will disable automatically install updates.

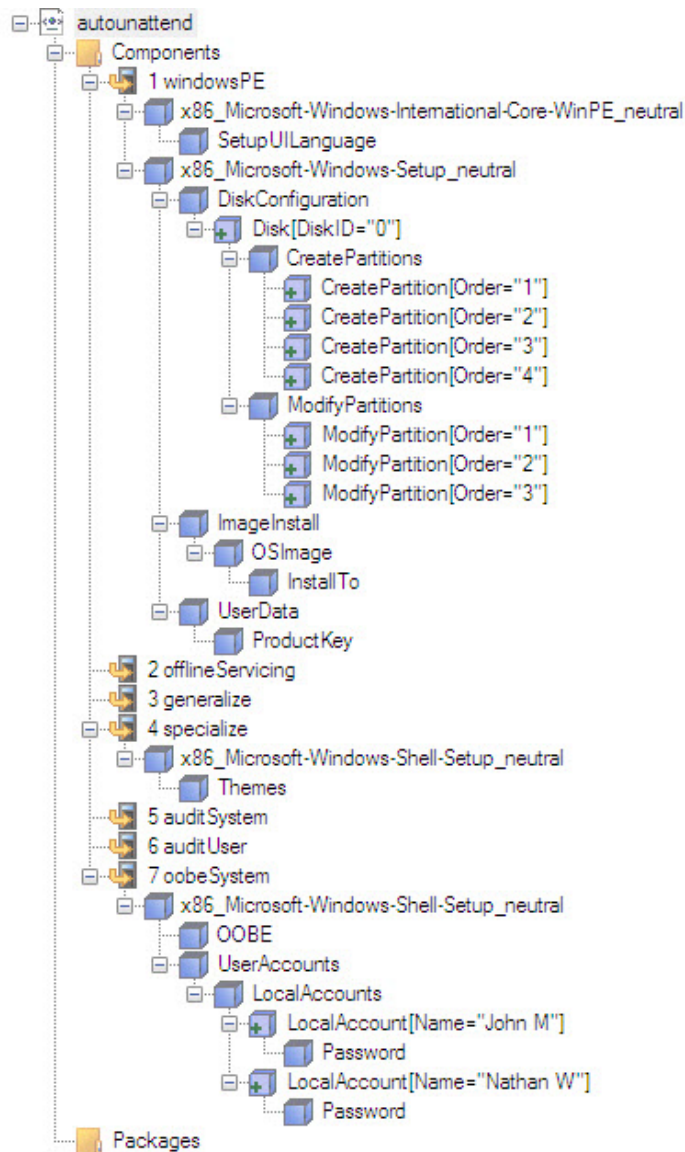
Note: Normally you would set ProtectYourPC to 1, automatically install updates. But to reduce the installation time for this lab we will set the value to 3.



Step 12

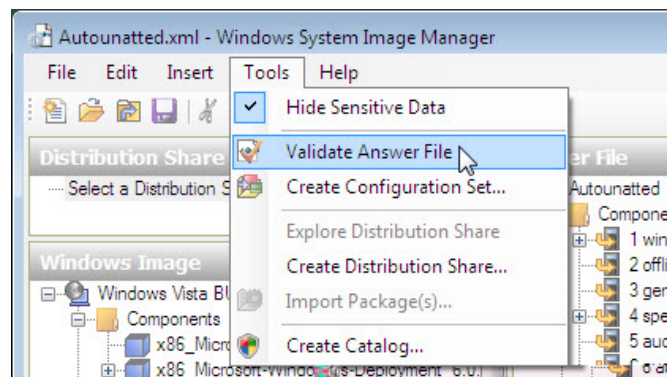
Validate and Save the Answer File

Before validating the answer file, expand all components in the autounattend file to make sure everything is properly added.

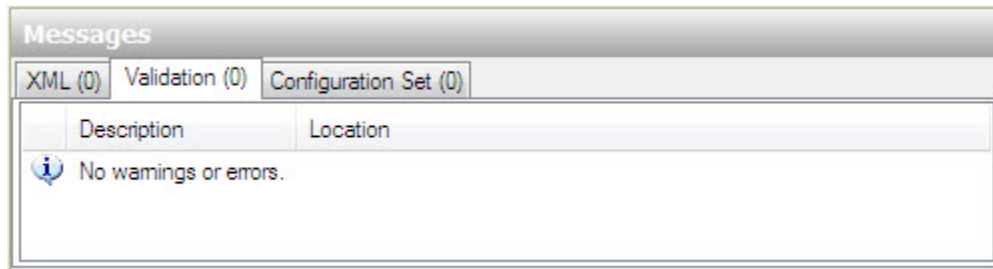


If anything is missing go back over the lab and add the missing components or settings.

Click **Tools > Validate Answer File**.



Select the **Validation** tab in the Messages pane.



If you see any error or warning messages, ask your instructor for assistance in correcting them before proceeding with the lab.

If there are no error or warning messages click **File > Save Answer File**.

Step 13

Copy the autounattend.xml file from **C:\Vista_Installation** to the root of the floppy disk or USB flash drive.

Insert the floppy disk in the floppy drive or connect the USB flash drive to a USB port.

Insert the Windows Vista Business DVD in the DVD-ROM drive.

Restart the computer.

Step 14

When the "Press Any Key to Boot from CD or DVD" message appears, press any key on the keyboard.

The installation of Windows Business will proceed in a completely unattended fashion, then Vista will run a performance check, and finally you will be presented with the logon screen.

Note: The system will flash on and off several times, restart several times, and other times only a black or blue screen will appear with nothing else shown during the installation.

Logon to the computer using the administrator name and password used in the autounattend file.

What was the name of the file used to automate the installation located on the floppy disk or USB flash drive?

How do you think automating the installation will help the IT Department if they have to repeat the procedure on 100 computers?