

## 5.5.3 Lab: Managing Administrative Settings and Snap-ins in Windows XP

### Introduction

Print and complete this lab.

In this lab, you will use administrative tools to monitor system resources. You will also build a custom console to manage storage devices.

### Recommended Equipment

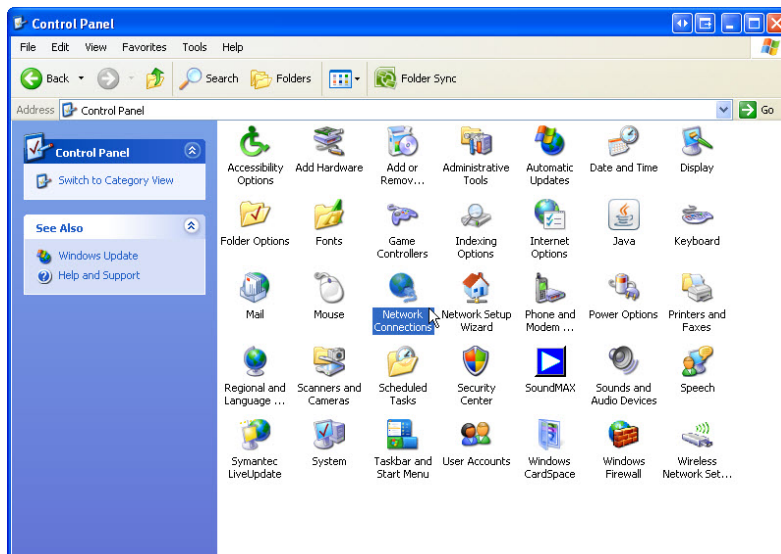
The following equipment is required for this exercise:

- A computer running Windows XP Professional
- Internet access

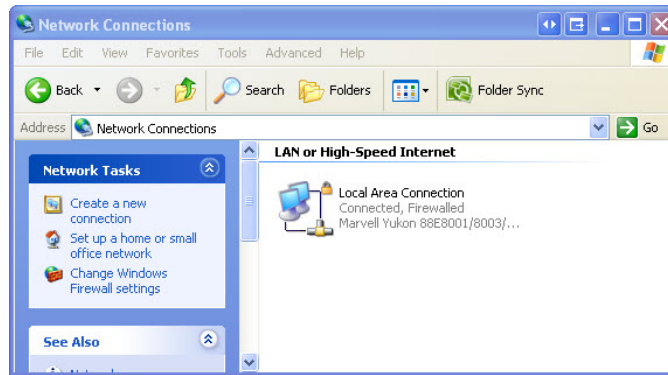
### Step 1

Log on to the computer as an administrator.

Navigate to the “Control Panel” window by clicking **Start > Control Panel**. Double-click the **Network Connections** icon.

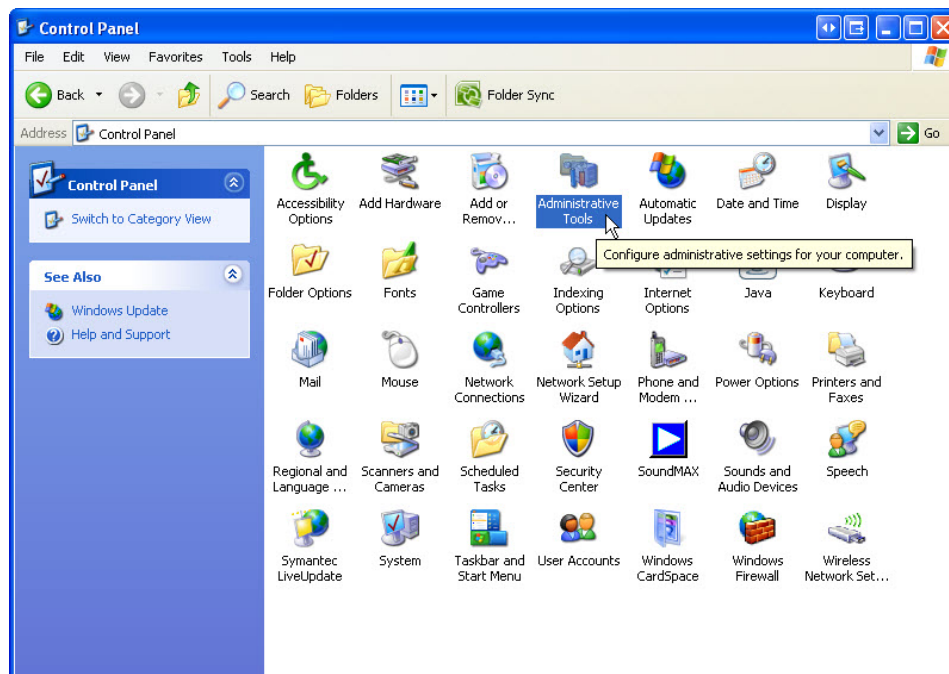


Reduce the size of the “Network Connections” window. Leave this window open.

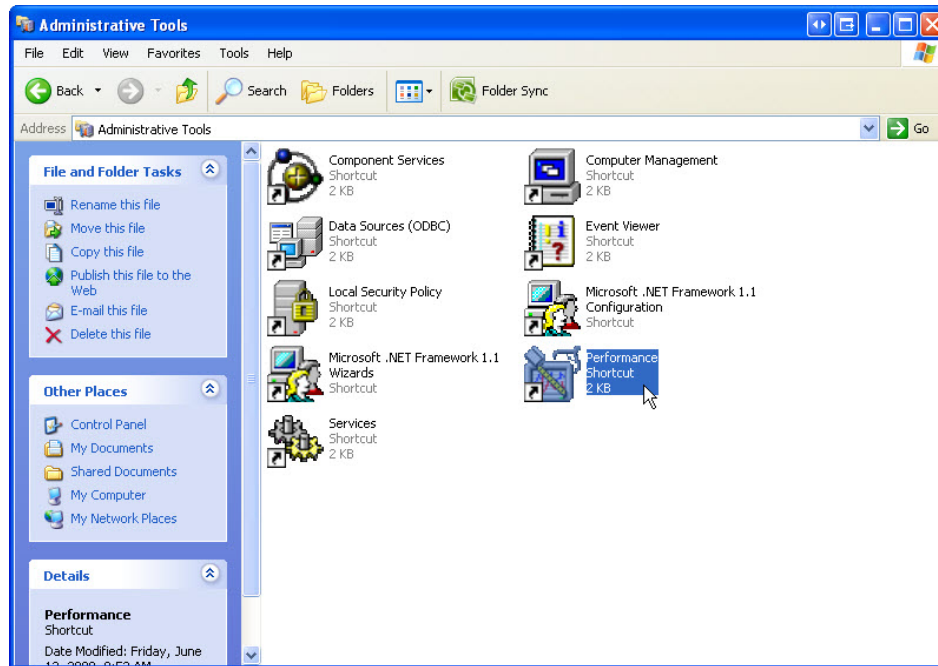


## Step 2

Once again navigate to the “Control Panel” window by clicking **Start > Control Panel**. Double-click the **Administrative Tools** icon.

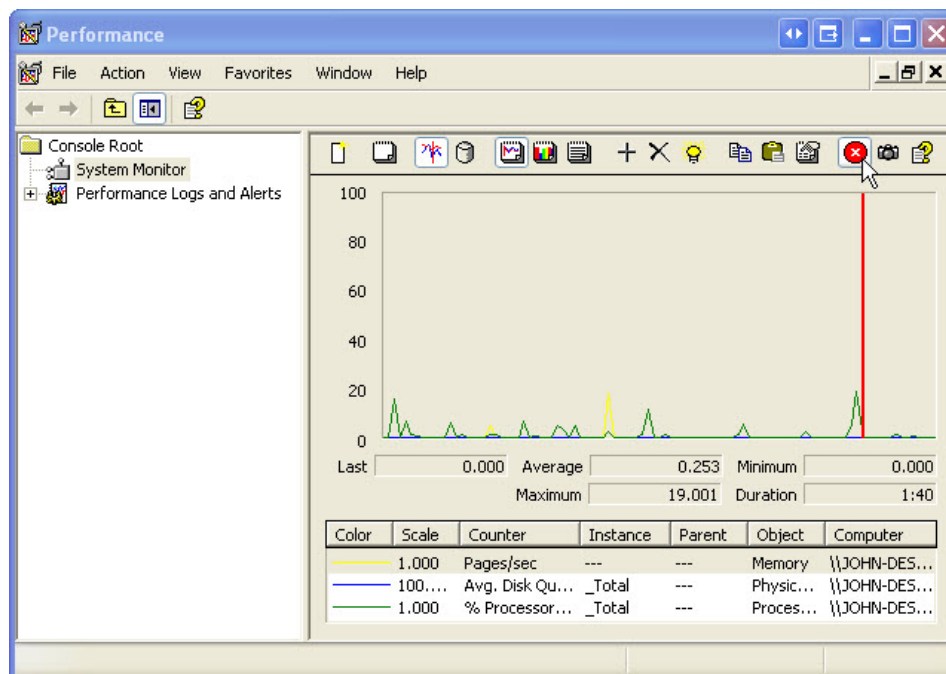


Double-click the **Performance** icon.

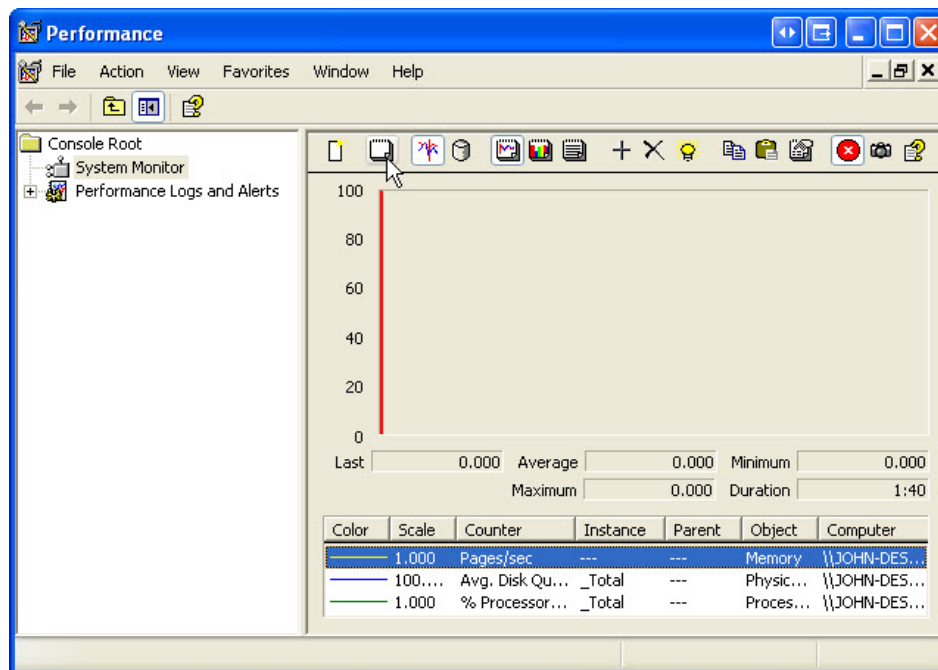


### Step 3

The “Performance” window appears. Make sure the System Monitor in the left pane is highlighted. Click the **Freeze Display** icon to stop the recording.

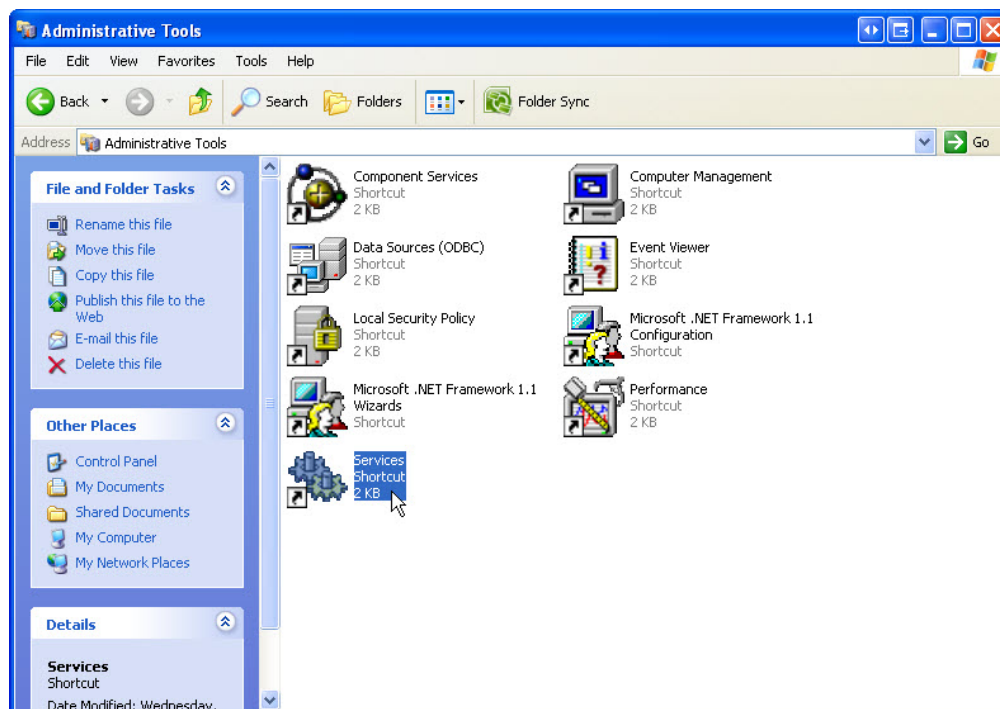


Click the **Clear Display** icon to clear the graph. Leave this window open.



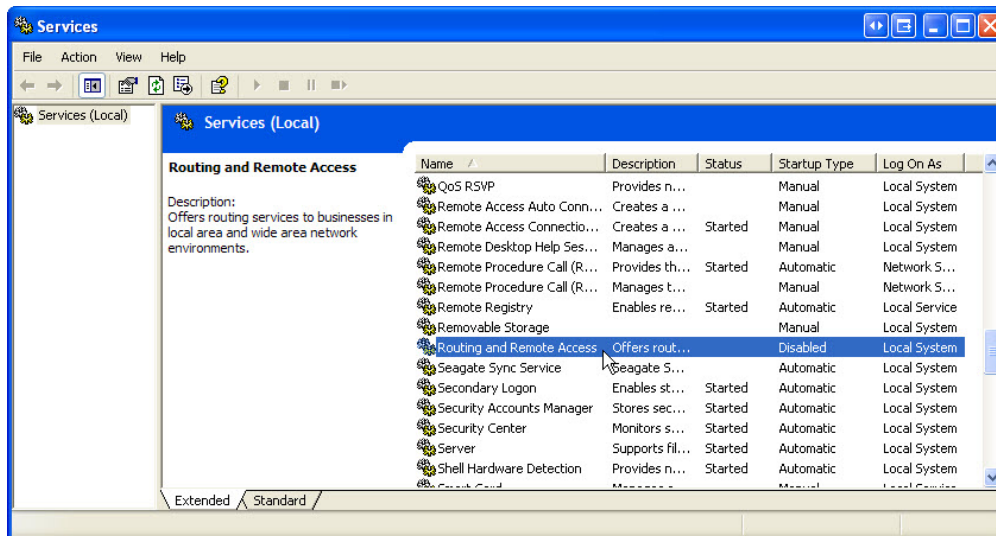
#### Step 4

Navigate to the “Administrative Tools” window by clicking **Start > Control Panel > Administrative Tools**. Double-click the **Services** icon.

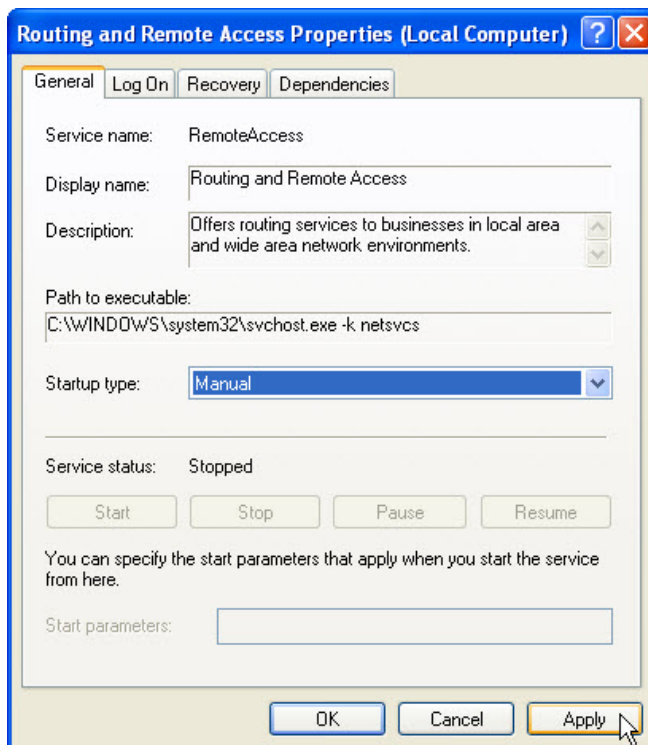


**Step 5**

Expand the width of the “Services” window so you have a clear view of the content. Scroll down in the right pane until you see the service Routing and Remote Access. Double click **Routing and Remote Access**.



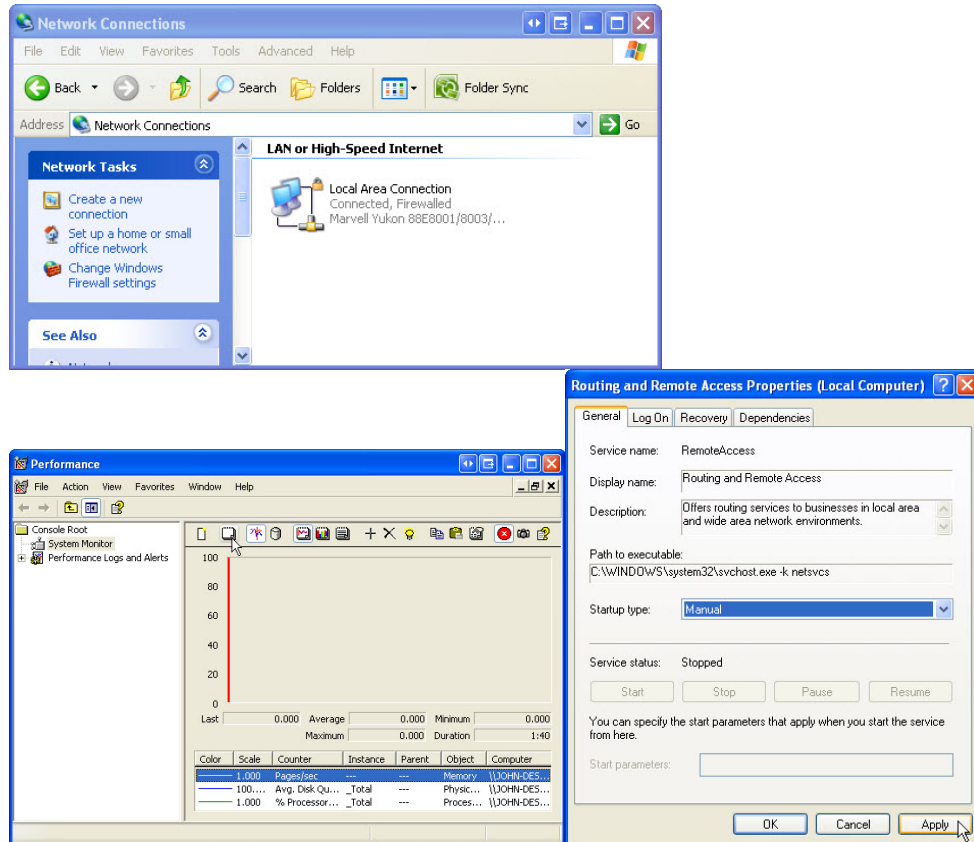
The “Routing and Remote Access Properties (Local Computer)” window appears. In the Startup type select **Manual**. Click **Apply**.



The Start button is now active; do not click the button yet. Leave this window open.

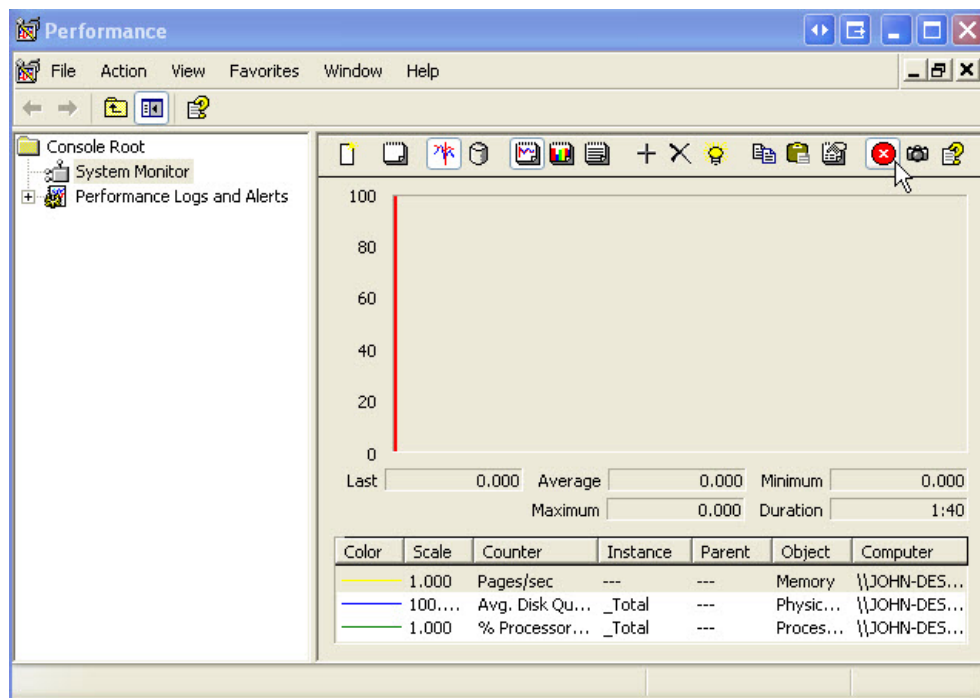
## Step 6

Position the following three windows so you can clearly see them at the same time for steps 7 to 14: Network Connections, Routing and Remote Access Properties (Local Computer), and Performance.



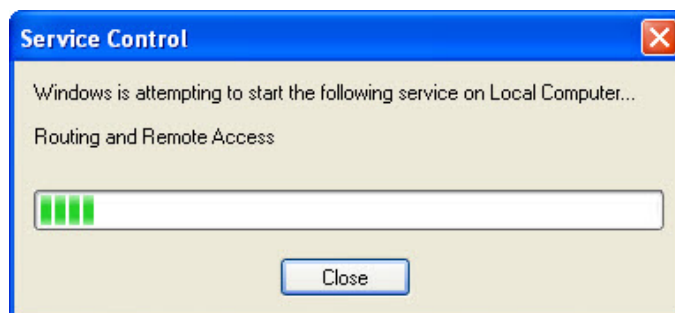
**Step 7**

Click the “Performance” window so it is activated. Click the **Freeze Display** icon to start the recording.

**Step 8**

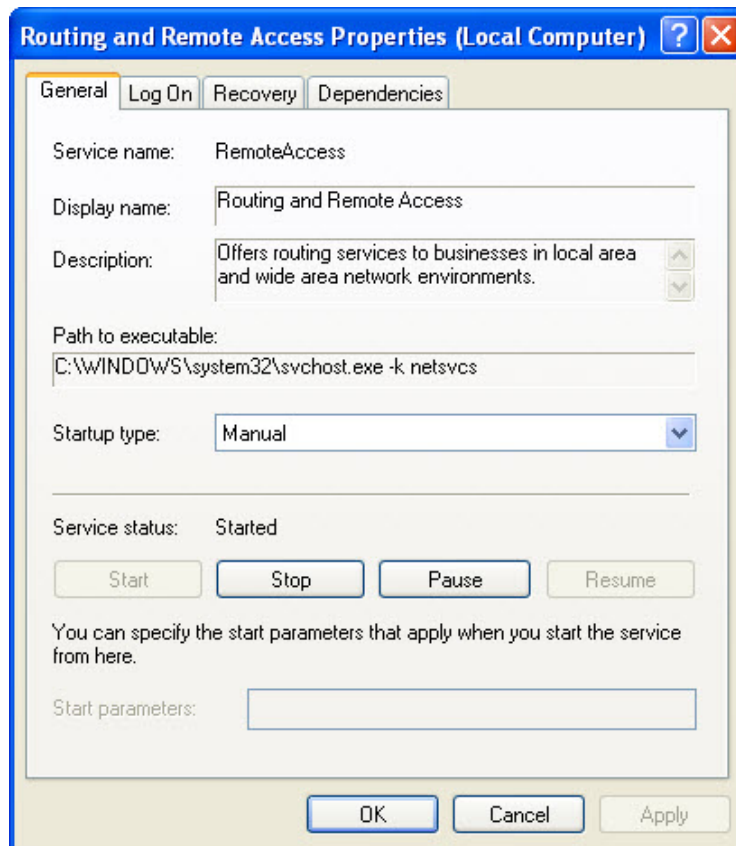
Click the “Routing and Remote Access Properties (Local Computer)” window so it is activated. To start the Service click **Start**.

A window with a progress bar appears.



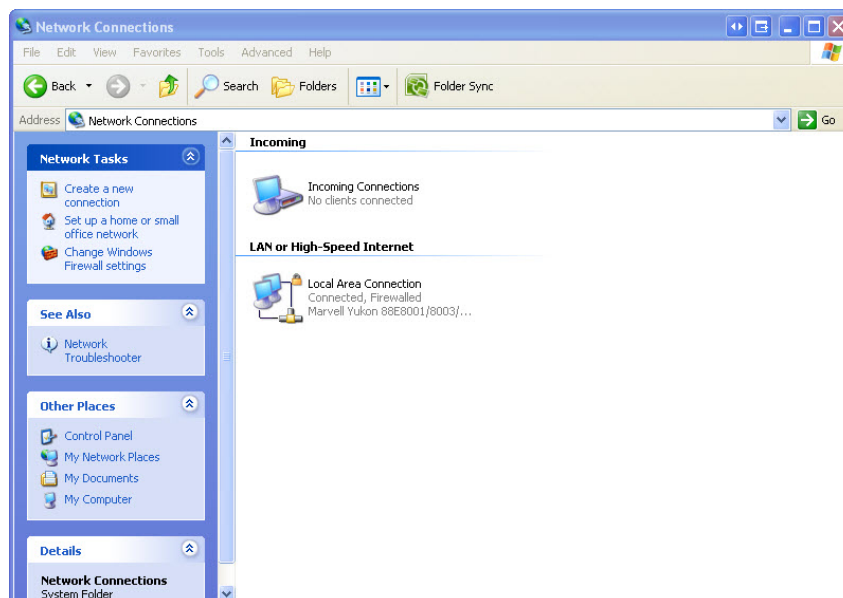


The “Routing and Remote Access Properties (Local Computer)” window now shows the Stop and Pause button active. Leave this window open.



## Step 9

Click the “Network Connections” window so it is activated.

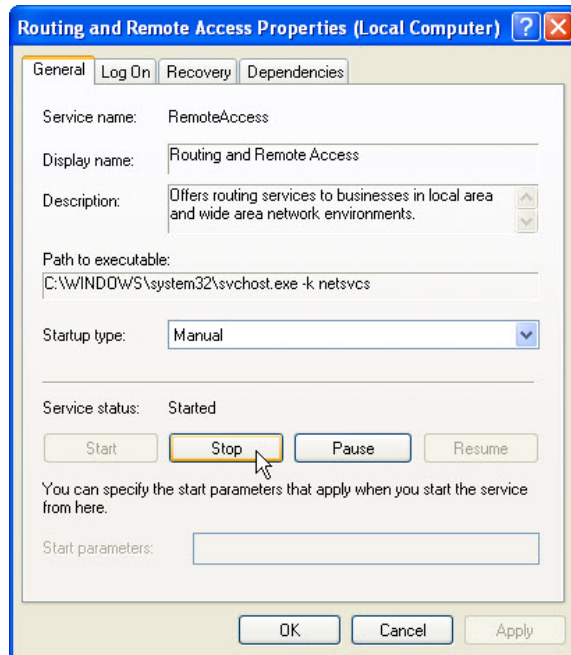




1. What changes appear in the right pane, after starting the Routing and Remote Access service?

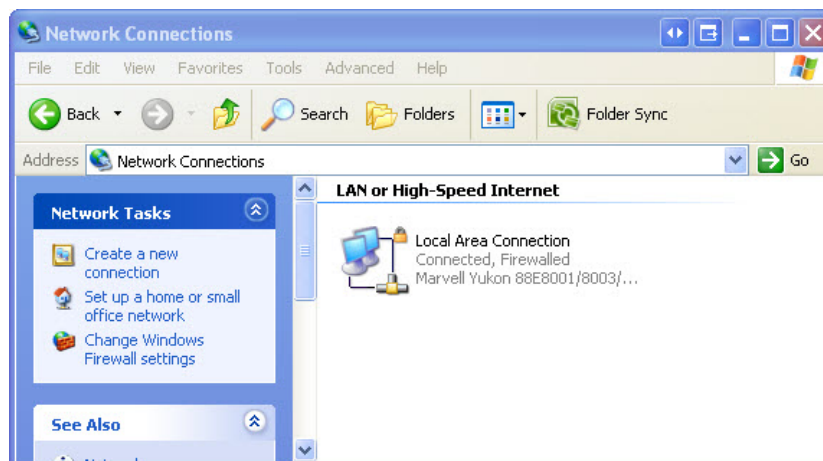
## Step 10

Click the “Routing and Remote Access Properties (Local Computer)” window so it is activated. Click **Stop**.



## Step 11

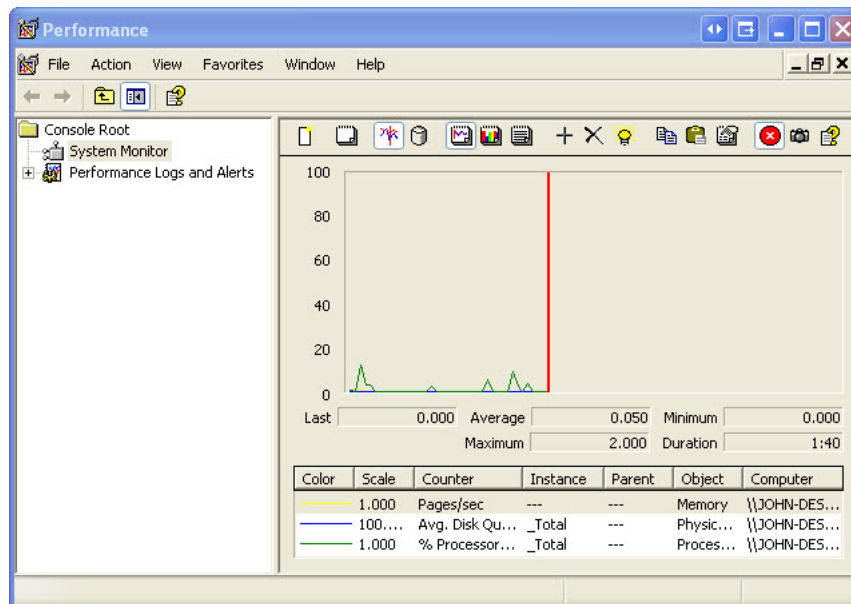
Click the “Network Connections” window so it is activated.



2. What changes appear in the right pane, after stopping the Routing and Remote Access service?

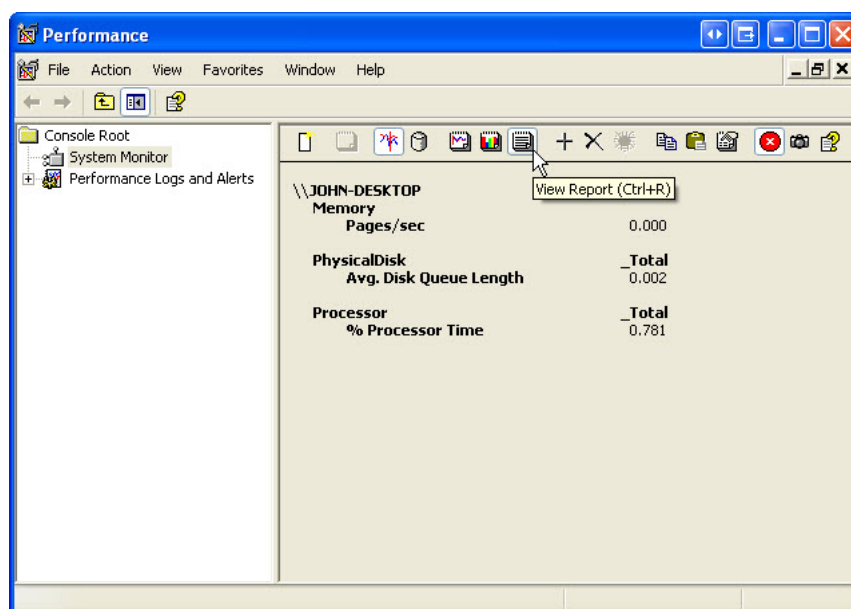
**Step 12**

Click the “Performance” window so it is activated. Click the **Freeze Display** icon to stop the recording.



3. Which Counter is being recorded the most in the graph (hint: look at the graph color and Counter color)?

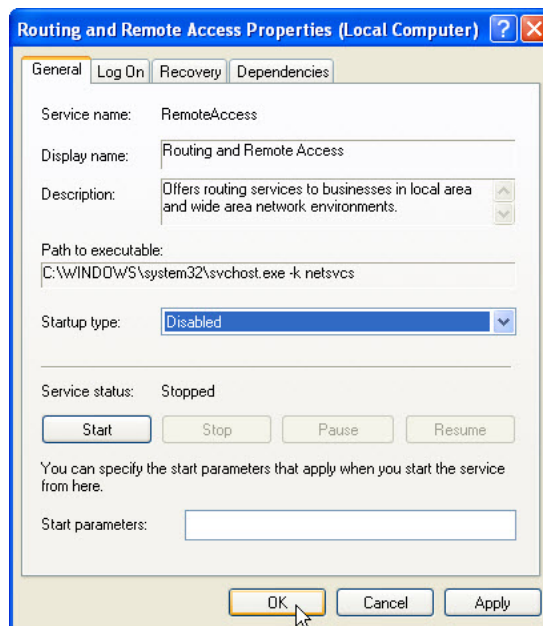
Click the **View Report** icon.



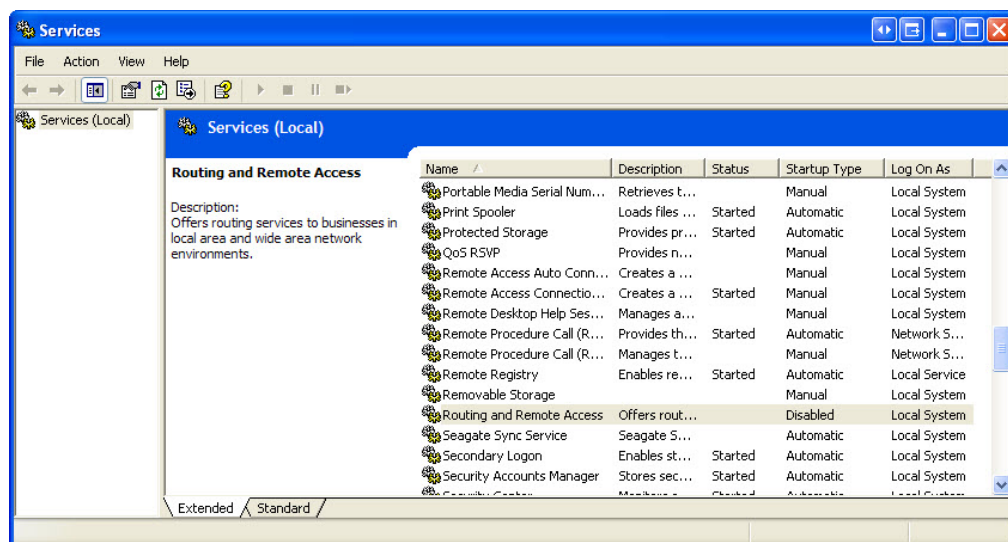
- List the values of the three counters.

### Step 13

Click the “Routing and Remote Access Properties (Local Computer)” window so it is activated. In the Startup type select **Disabled**. Click **OK**.



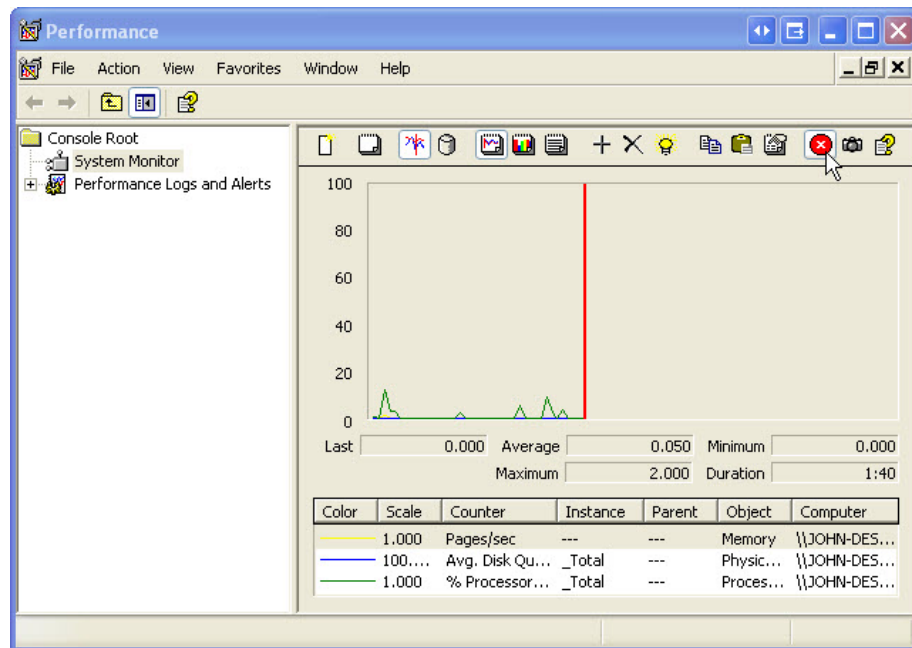
Click the “Service” window so it is activated.



- What is the Status and Startup Type for Routing and Remote Access?

**Step 14**

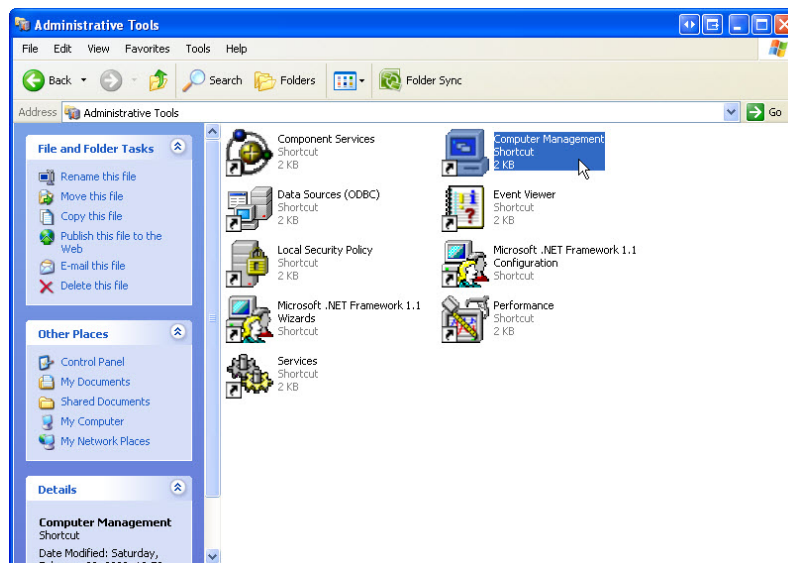
Click the “Performance” window so it is activated. Click the **Freeze Display** icon to start the recording.

**Step 15**

Close all open windows.

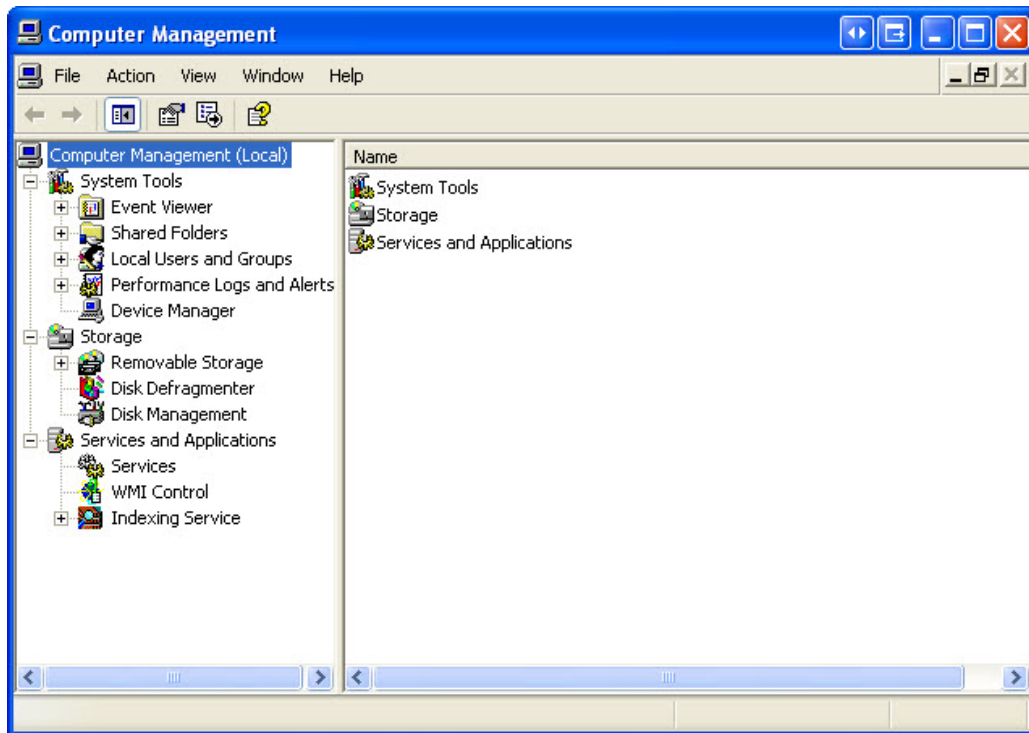
**Step 16**

Navigate to the “Control Panel” window by clicking **Start > Control Panel**. Double-click the **Computer Management** icon.

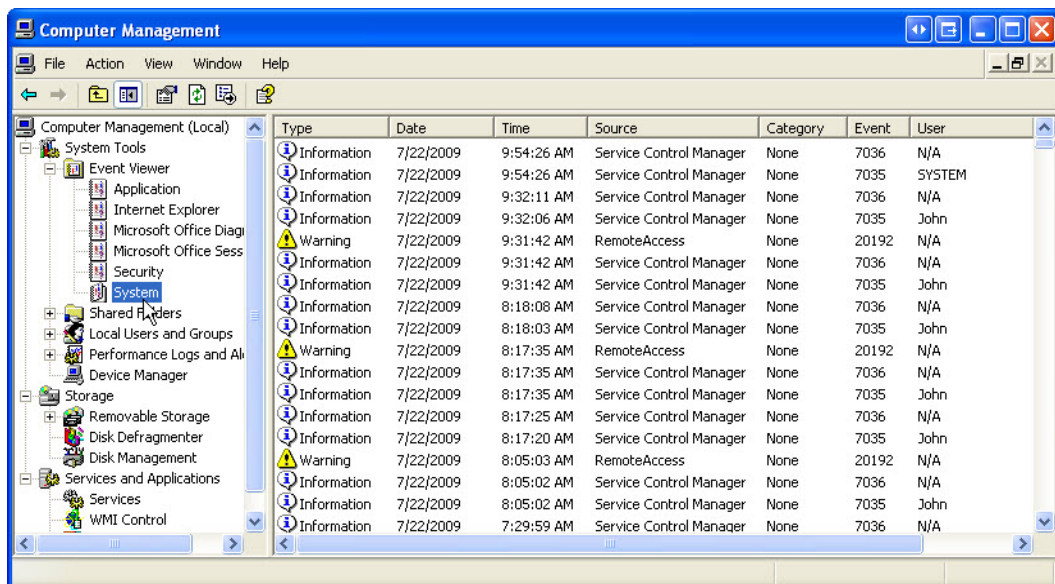


**Step 17**

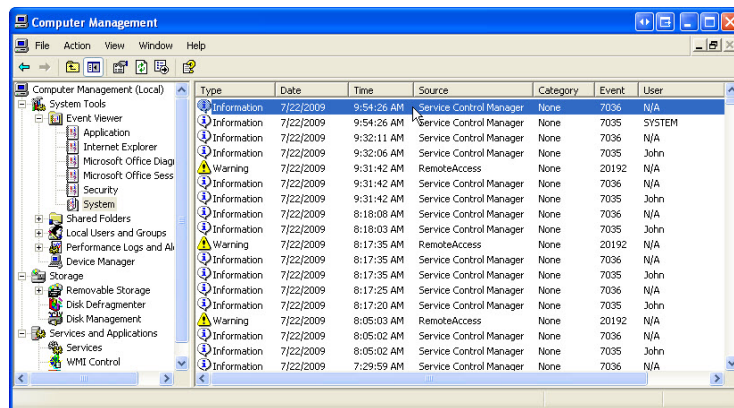
The “Computer Management” window appears. Expand the three categories by clicking on the **plus sign** next to: System Tools, Storage and Services, and Applications.

**Step 18**

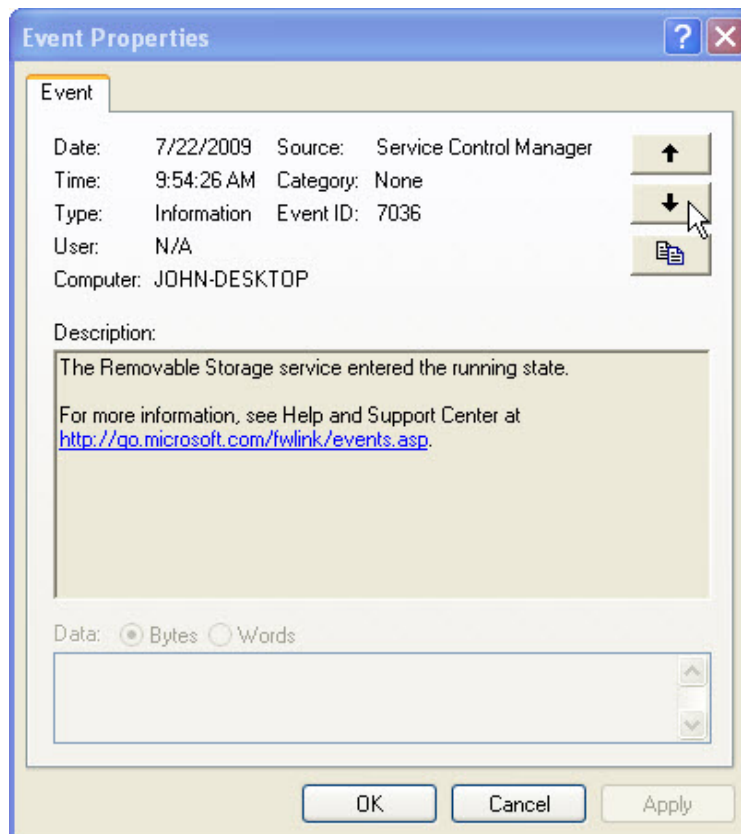
Click the **plus sign** next to Event Viewer. Then click on **System**.



Double click the first event in the window.



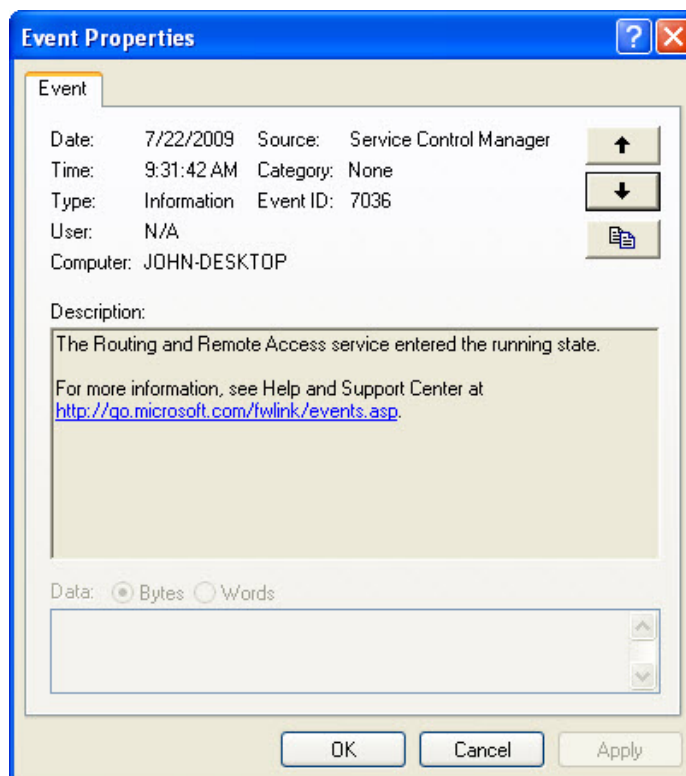
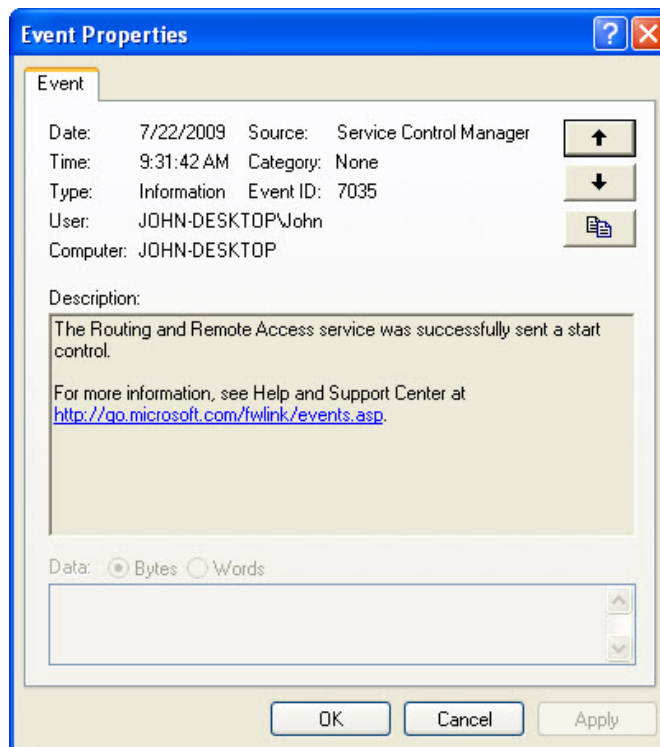
The “Event Properties” window appears for the event. Click the down arrow key to locate an event for Routing and Remote Access.



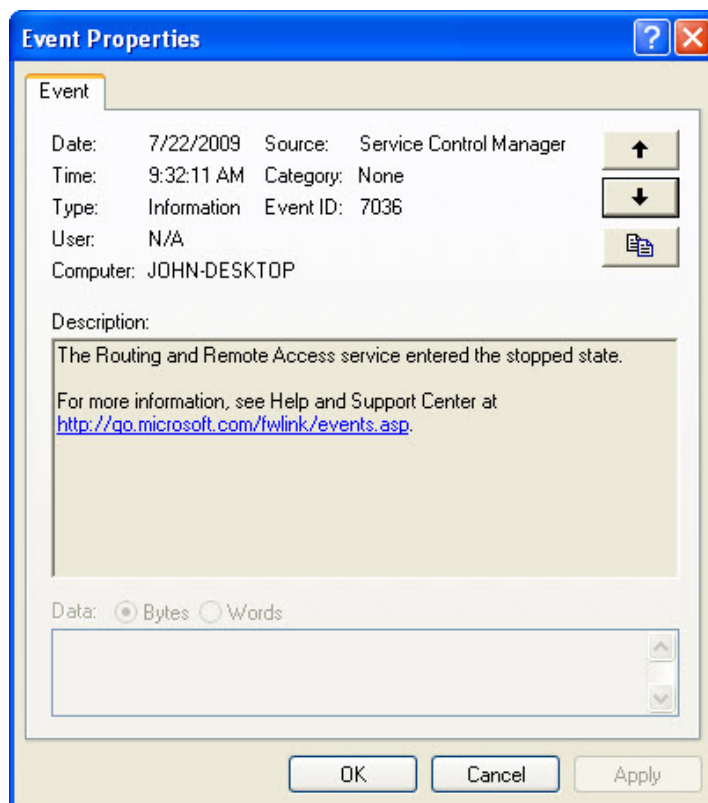
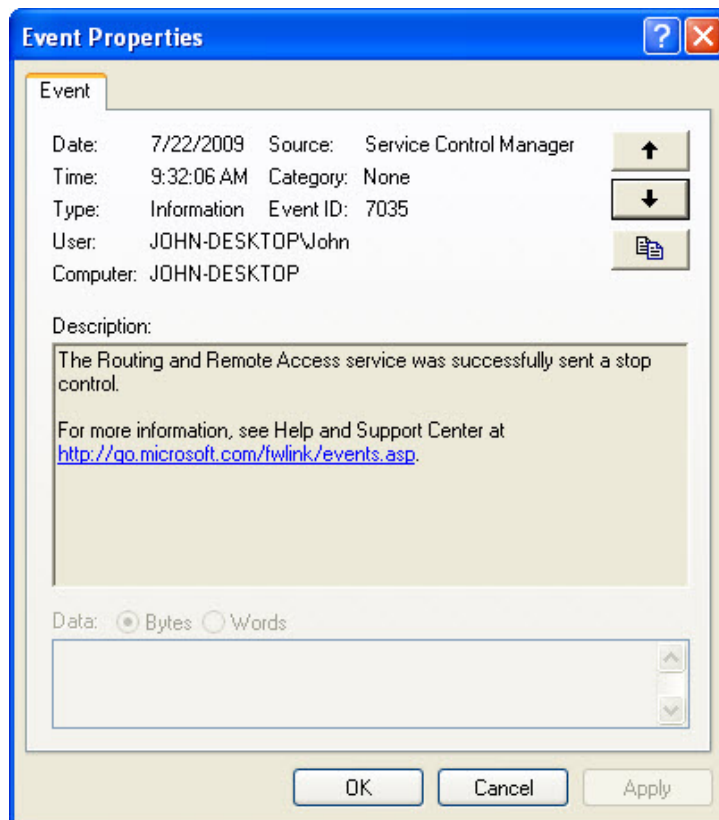
### Step 19

You should find four events that describe the order for starting and stopping the Routing and Remote access service.

Write down the description for each of the four events. Do not include any URL information.





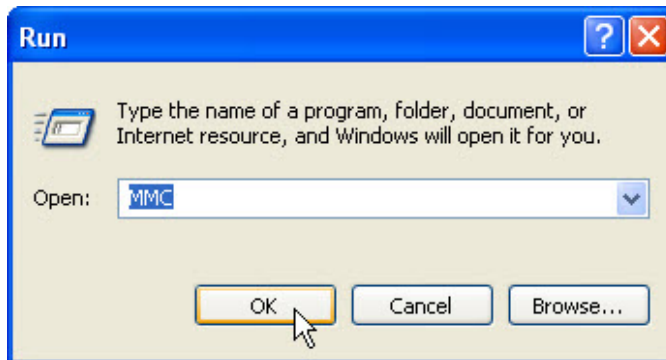


**Step 20**

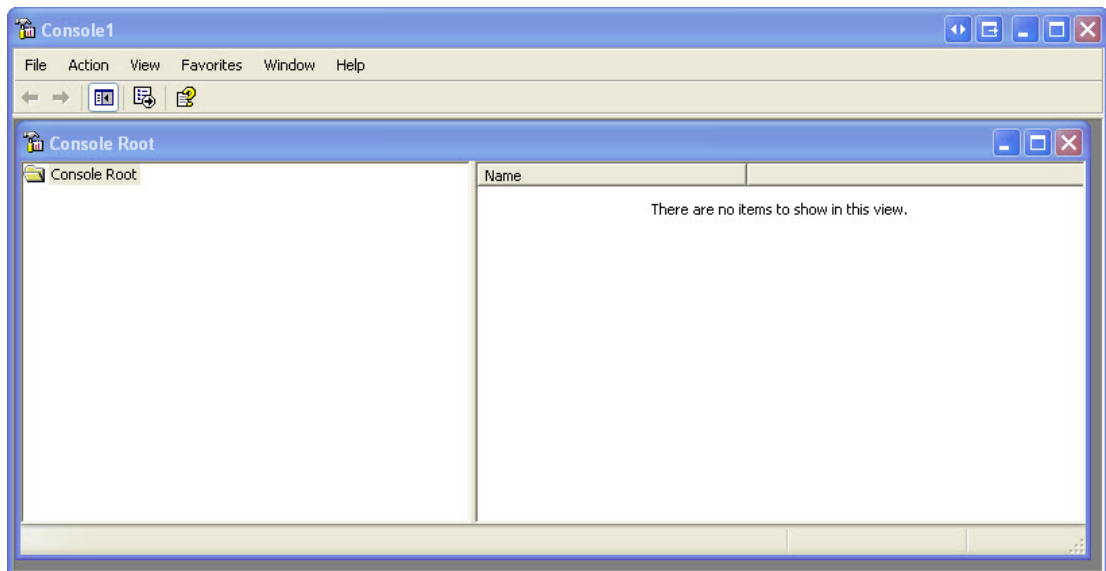
Close all open windows.

**Step 21**

Navigate to the “Run” window by clicking **Start > Run**. Type **MMC** and click **OK**.

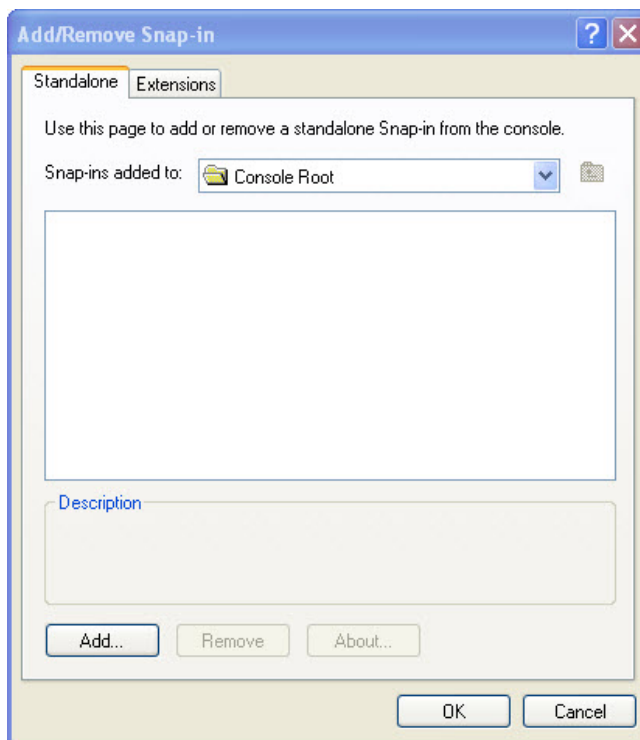
**Step 22**

The “Console1” (console number may vary) window and the Console Root window appear.

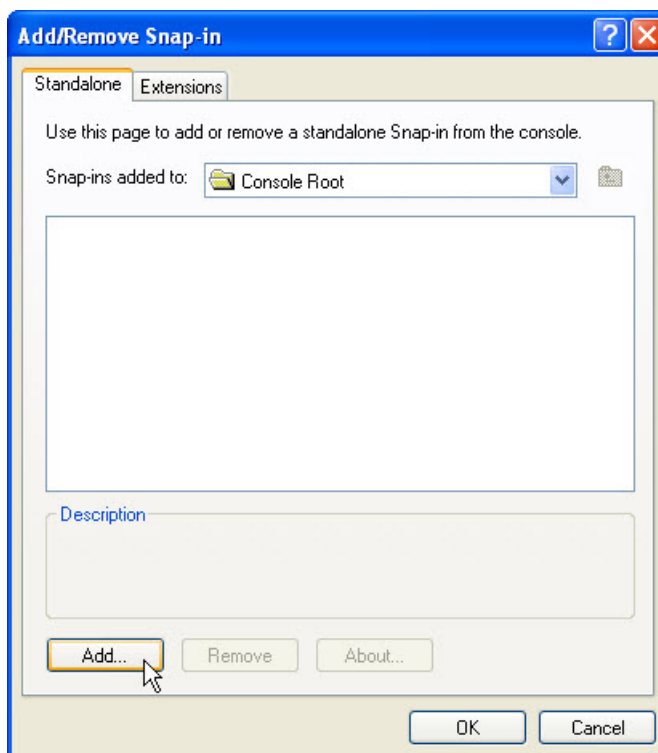


**Step 23**

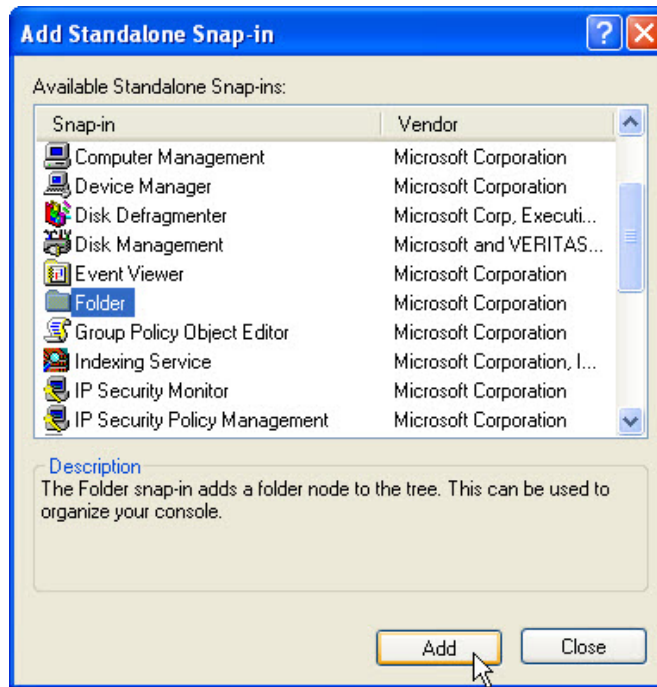
To build your own custom console click **File > Add/Remove Snap-in**. The “Add/Remove Snap-in” window appears.



To add a snap-in click **Add**.



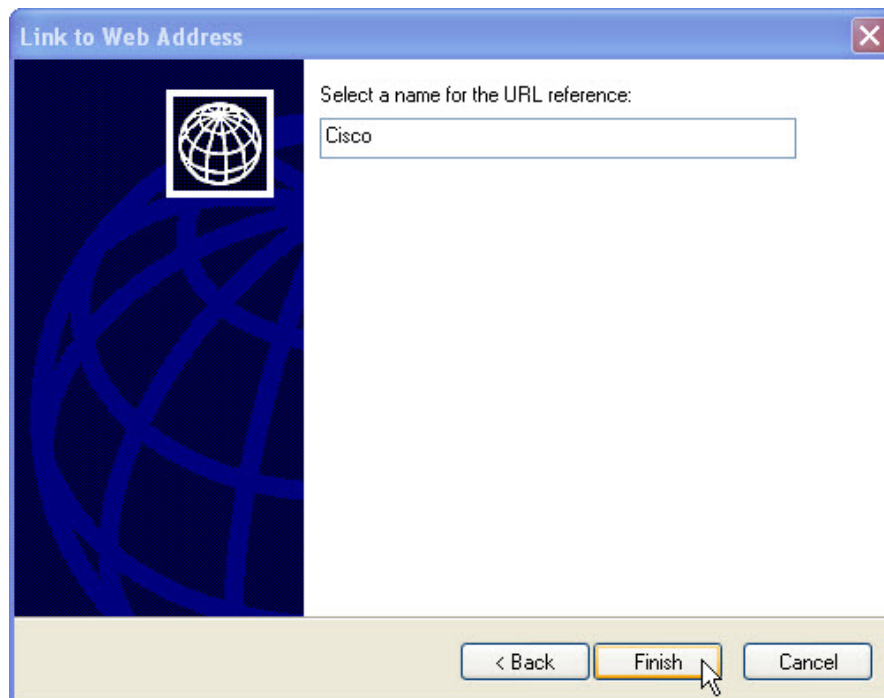
The “Add Standalone Snap-in” window appears. To add a folder snap-in so that you can organize all your snap-ins, scroll down until you see the Folder snap-in. Select **Folder** > click **Add**.



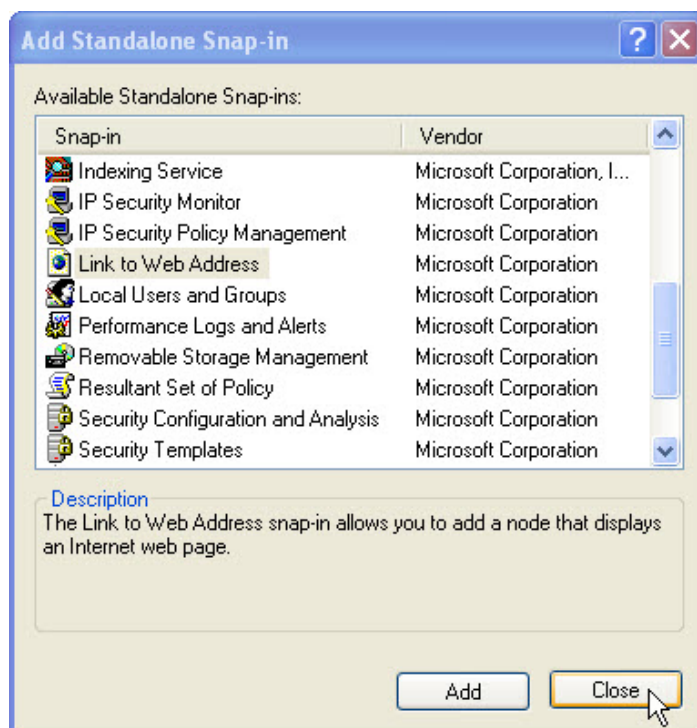
To add the “Link to Web Address” snap-in, scroll down until you see the snap-in. Select **Link to Web Address** > click **Add**. The “Link to Web Address” wizard opens. In the Target box type **http://www.cisco.com/**. Click **Next**.



In the “Select a name for the URL reference” box type **Cisco**. Click **Finish**.

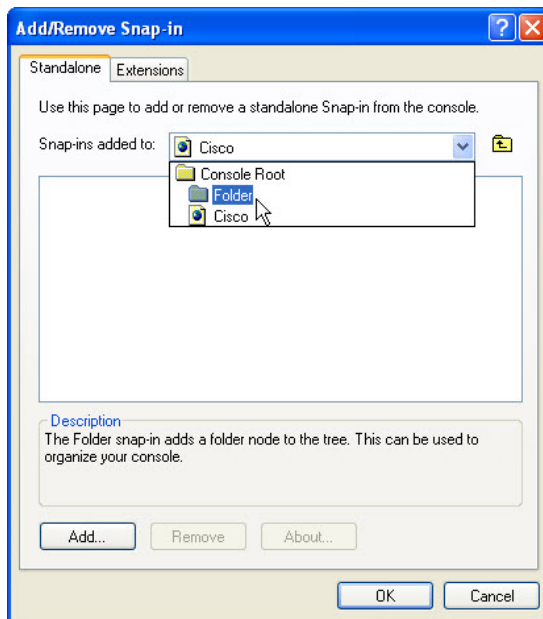


To close the "Add Standalone Snap-in" window, click **Close**.



**Step 24**

Click the “Add/Remove Snap-in” window so it is activated. In the “Snap-ins added to” box select **Folder**. Click **Add**.

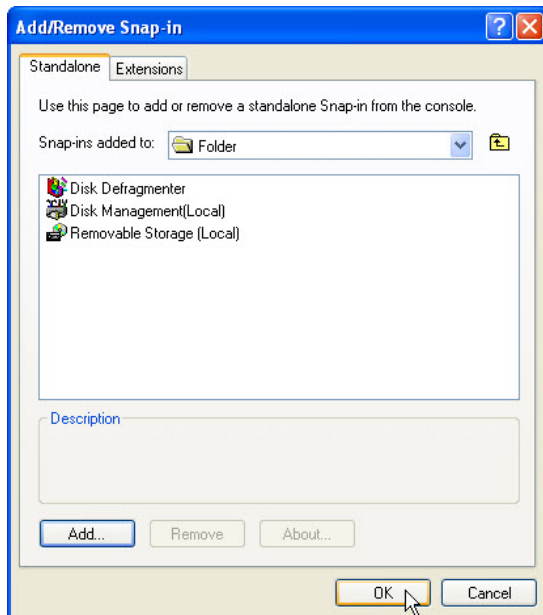


Add these snap-ins: Disk Defragmenter, Disk Management, and Removable Storage Management.

Note: When asked what computer the snap-in will manage; select the default by clicking **Finish**.

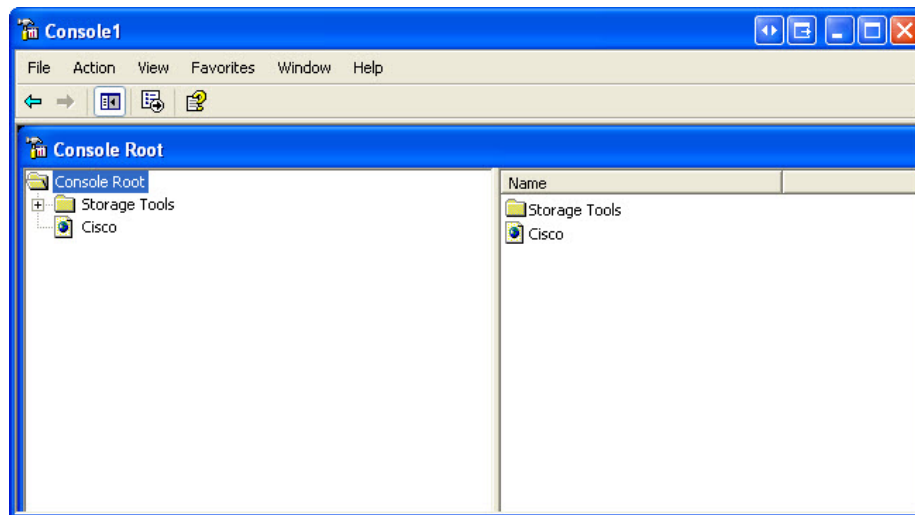
To close the “Add Standalone Snap-in” window, click **Close**.

Click the “Add/Remove Snap-in” window so it is activated. Click **OK**.



## Step 25

The “Console1” window appears. Right click the Folder icon and select Rename. Change the name of the folder to Storage Tools.



To save the custom console click **File > Save As**. Change the file name to your name. Example: **John's Console**. Change the “Save in” box to **Desktop**. Click **Save**.

## Step 26

Close all open windows.

On the desktop double click the **Console** icon to re-open the console with your snap-ins.

