

7.4.2 Lab: Install All-in-One Device and Software

Introduction

Print and complete this lab.

In this lab, you will install an all-in-one device. You will find, download, and update the driver and the software for the all-in-one device.

Recommended Equipment

- A Computer running Window XP Professional
- Internet connection
- All-in-one device

Step 1

If you are installing an all-in-one device that connects to a parallel port, shut down the computer and connect the cable to the all-in-one device and computer using a parallel cable. Plug the all-in-one device power cord into an AC outlet and unlock the all-in-one device if necessary. Restart your computer.

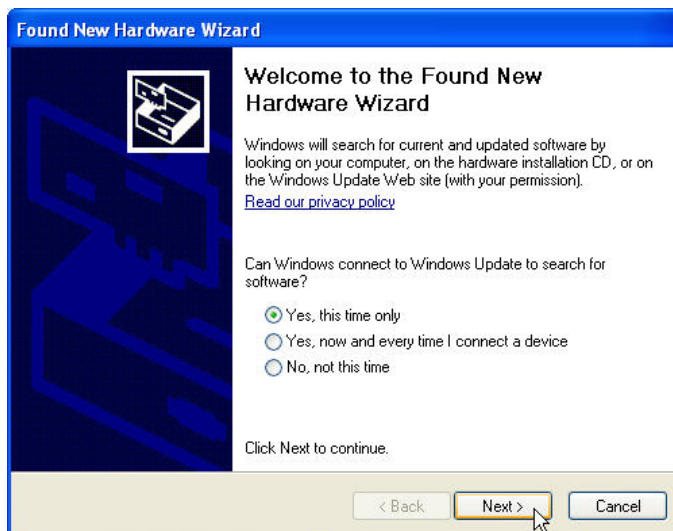
If you are installing a USB all-in-one device, plug the all-in-one device into the computer using a USB cable. Plug the all-in-one device power cord into an AC outlet if necessary. Unlock the all-in-one device if it is locked.

Step 2

Windows detects the new hardware.

The “Found New Hardware Wizard” window appears.

Click the **Yes, this time only** radio button, and then click **Next**.



The second screen of the Found New Hardware Wizard appears.

The default is “Install the software automatically (Recommended)”.

Click **Next**.

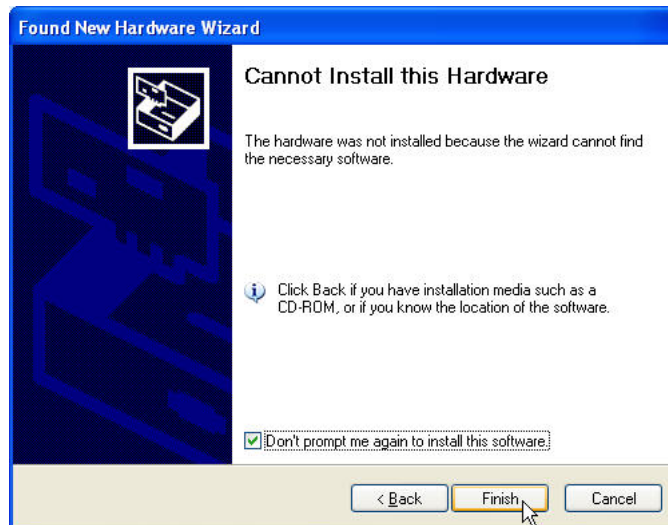


The “Please wait while the wizard searches...” window appears.



The “Cannot Install this Hardware” window may appear.

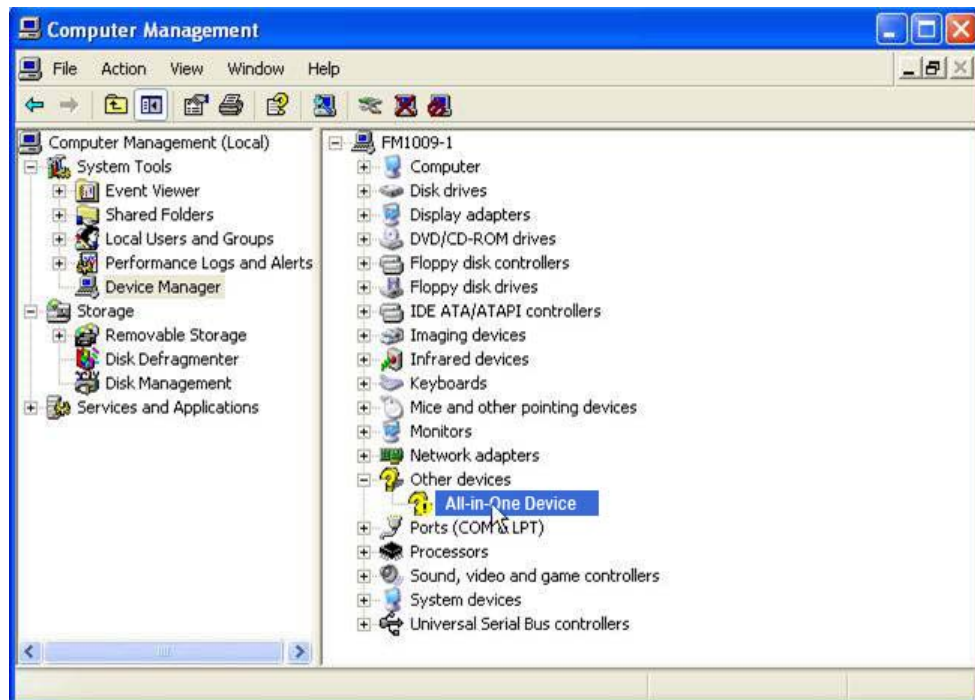
If this happens, click **Finish**.



Step 3

If the computer does not detect the all-in-one device, right-click **My Computer**, then choose **Manage > Device Manager**.

Under "Other Devices", double-click the all-in-one device you are trying to install.



Step 4

The “Properties” window for the all-in-one device appears.

The “Device Status” area shows that “The drivers for this device are not installed. (Code 28)”.

Do not click “Reinstall Driver...” at this time.

Click **Cancel**.

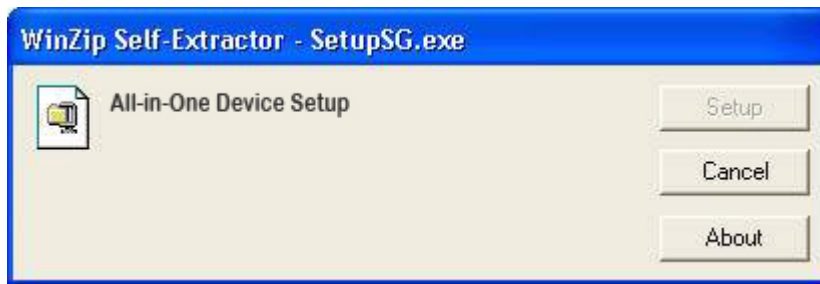
**Step 5**

Find the manufacturer and the model number of the all-in-one device.

Visit the manufacturer’s web site and navigate to the product downloads or support page. Download the most recent driver and software for the model of all-in-one device that you have installed. The software and driver must be compatible with your operating system.

Download the driver to a temporary folder on your desktop.

Double-click the installation file that you downloaded.



Step 6

Unplug the all-in-one device, and plug it back in.

The Windows XP operating system detects the new device and installs the new drivers.

To verify, right-click **My Computer**, and then choose **Manage > Device Manager**. You should now see the all-in-one device installed under "Imaging devices" on the right side of the window.

